

Engine

Imported Cummins QSL9 EFI inline six-cylinder, water-cooled and four-stroke diesel engine with a rated power of 242kW and rated rotational speed of 2100rpm; the maximum output torque is 1424N·m and maximum rotational speed of maximum output torque of 1500rpm, meeting the European Non Road Mobile Machinery Emission Standard Tier III.

It is equipped with a 400L diesel fuel tank, of which the fuel oil capacity is displayed by oil gauge or electronic device.

The engine is equipped with air pre-filter, duplex air filter, low noise fan, combined cooler and other peripheral accessories specified by Cummins.

Control

Hydraulic control system can control the main and auxiliary winches and as well as boom luffing, swing and travel precisely and steadily.

Adopt load sensitive control or positive flow control, limit load adjustment control and electro-hydraulic proportional micro-motion operations, featuring higher power availability and better micro-motion performance.

Hydraulic System

Hydraulic system consists of three parts: main loop system, control system and auxiliary system. Its main hydraulic components come from Kawasaki or Rexroth.

Kawasaki system is an open-type positive flow system, which features rapid operating response, steady and accurate action, little heat radiation and long service life.

Rexroth system is a load-sensitive LUDV system, which is able to achieve load-unrelated flow distribution, adopts hydraulic proportional presurcur control and features sensitive operation and perfect micro-motion.

The system pressure is 31.4 MPa.

Main and Auxiliary Hoisting Mechanism

Main/auxiliary winch is driven independently. The structure-compact, easy-to- install, low-wear and maintenance-free built-in wet brake ensures the safety of winches.

Variable displacement hydraulic motor automatically adjusts the displacement to achieve maximum winch speed according to the load.

Use high-quality non-rotating wire rope, which can ensure a high hoisting safety and long service life.

The adoption of bag type rope tip makes it easy and quick to disassemble wire rope.

Main hoisting mechanism	Diameter of winch drum	615mm
	Speed of the outmost working layer of wire rope	0~143 m/min
	Diameter of wire rope	26 mm
	Length of the wire rope of main winch	480m
	Rated single line-pull	14.5t
Auxiliary hoisting mechanism	Diameter of drum	615mm
	Speed of the outmost working layer of wire rope	0~143 m/min
	Diameter of wire rope	26 mm
	Length of the wire rope of auxiliary winch	390m
	Rated single line-pull	14.5t

Swing System

Swing part: Driven by swing motor and with an allowable swing angle of 360°.

Swing braking: spring lockout and disc braking.

Swing locking: locking device is provided to ensure safe locking for the swinging of upper structure during operation or transportation; and sensor is installed to ensure no swing operation under swing locking condition.

Swing bearing device: Three-row roller swing bearing.

Swing speed: Maximum 1.8 r/min (basic boom, no load).

Boom luffing Mechanism

Boom luffing drum is equipped with ratchet and pawl locking gear to ensure the safety of boom under shutdown conditions.

Boom luffing mechanism	Diameter of drum	592mm
	Speed of the outmost working layer of wire rope	(0~31) ×2 m/min
	Diameter of wire rope	22mm
	Length of the wire rope of boom luffing mechanism	350m
	Rated single line-pull	11.2t

Jib Luffing Mechanism

Auxiliary luffing drum is equipped with ratchet and pawl locking gear to ensure the safety of boom under non-operating conditions.

Upperworks

Jib luffing mechanism	Diameter of drum	592mm
	Speed of the outmost working layer of wire rope	0~34m/min
	Diameter of wire rope	22mm
	Length of the wire rope of Jib luffing mechanism	265m
	Rated single line-pull	11.2t

Counterweight

There are 12 counterweight blocks with each block of 6 tons, and the pallet weighs 13.2 tons, totaled up to 85.2 tons. Counterweight can be used to achieve self-assembly and disassembly, making it very convenient for disassembly and transport.

5.8 additional counterweight can be used to ensure a more powerful hoisting capacity in medium and long boom operating conditions.

Additional counterweight cannot be used to achieve self-assembly and disassembly.

Cab

The shape-streamlined and SANY-characteristic fully-closed and wide-vision cab is furnished with cooling and heating air conditioner, handles, adjustable seat, control console, armrest, smoke lighter, moment limiter, alarm light, pressure monitor etc., all of which are designed according to ergonomics.

The tilting feature of cab enlarges the operating vision of driver and improves the operating safety; its rotational feature reduces the transport width.

The cab can be adjusted to meet the operational requirement, which can not only be tilted up for 20°, but also can be rotated to the right ahead of the platform in order to ensure a convenient transportation.

Control Operation

Under the front bottom of the operator, there are levers and travel pedals with the left travel pedal(lever) driving the left crawler and the right one(lever) driving the right crawler, featuring automatic positive direction function, i.e. No matter how the upper structure rotates, the operating positive direction always means the positive direction of operator.

Pedal throttle is located at the right side of right travel pedal.

The main winch, auxiliary winch, boom luffing handle of Kawasaki as well as the main winch, auxiliary winch handle of Rexroth are mounted at the front of the right control box, while engine startup switch, micro-speed control knob, mode switching knob, oil channel switching, hand throttle control knob, and relief switch knob are also mounted on the right control box.

The jib luffing and swing handle of Kawasaki, the boom luffing, jib luffing and swing handle of Rexroth as well as the smoke lighter, pressure monitoring gauge, swing and jib luffing switching, swing locking control switch, illumination light control switch, indicator light, radio, and control panel of air conditioner are mounted on the left control box.

The moment limiter display mounted at the front left of operator to display various relevant real-time information.

Alarm Display

When any error occurs, all alarm information will be displayed on the LCD of left control box in the cab and an acousto-optic alarm will be sent out.

Other information about wind speed, water temperature, oil temperature, oil volume, oil pressure, operating time, servo pressure and engine revolution will be displayed on the LCD according to operating options.

When A-frame is not fully hoisted, if the mode is set as operating mode, alarm will be sent out.

Lubrication System

The upperworks adopt automatical centralized lubrication system, which decreases maintenance and ensures reliable lubrication of moving parts

Lower Structure

Travel Driving Mechanism

Independent travel driving mechanism is installed in each track frame. The hydraulic travel motor drives planetary gear speed reducer and achieves independent travel through the transmission of driving wheel.

Travel Brake

Travel brake is a constantly-closed (i.e. it will be under braking status when the control pedal valve is not stepped down) disc brake, which is installed in speed reducer. It can be compensated automatically without any adjustment. When the control pedal valve is stepped down, the brake will be released and the crane travel.

Track Shoe

The left and right crawler travel mechanisms are composed of 138 crawler long-life track shoes with a width of 1220mm for each. The tensioning level of track shoes can be adjusted through hydraulic jack, with the position of adjusting spacer at ideal tightness.

Lower Structure

Chassis

It is a frame structure made of high-strength steel-welded framework, which is connected with track frame by hydraulic oil cylinder-driven power pin, easy for assembly and disassembly.

It is connected with the track frame by using hydraulic power pin and controlled by remote wired controller, ensuring the safety, convenience and reliability.

Large chassis design remarkably improves the stability of complete crane.

Lower structure counterweights are 24t with 12t at the front and rear end each. It can be disassembled and assembled automatically.

Travel Speed

Variable displacement motor can achieve dual speed travel with its low speed of 0~0.51km/h and high speed of 0~1.04km/h.

Operating Device

Main Boom

The main boom is made of high-strength main chord pipe. The boom frame is a space truss structure with uniform cross section in the middle and variable cross section at both ends. The steel pipes are welded and the end and foot of the boom frame are reinforced by steel plate so as to transfer the load.

The entire boom and operating positions are installed with high strength nonmetal walkway pedal, which provides convenience to work and ensures the work stability of complete crane simultaneously.

Standard boom sections includes boom base (8m), boom tip (8.5m), boom inserts (3m×1, 6m×2 and 12m×5).

The length of main boom is between basic boom length(16.5m) and maximum length (91.5m).

Luffing Jib

It is made of high-strength main chord pipe. The luffing jib is a spatial truss structure with uniform cross section in the middle and variable cross section at both ends. It is welded by using steel pipes, and the end and bottom of the jib frame are reinforced by steel plate so as to transfer load.

Jib tip(6.5m), jib base (6.5m), jib inserts(3m×2, 6m×1, 12m×3) can be used to form a jib of 22m, 25m,31m, 37m,43m, 52m and 61m.They can be installed on the main boom of 22.5m-61.5m. (Main boom/jib configuration shall be executed as per Instruction Manual).

Fixed Jib

It is made of high-strength main chord pipe. The fixed jib is a spatial truss structure with uniform cross section in the middle and variable cross section at both ends. It is welded by using steel pipes, and the end and bottom of the jib frame are reinforced by steel plate so as to transfer load.

Jib tip (5m), jib base (5m), jib inserts (3m×1, 6m×3) can be used to form a fixed jib of 13m, 19m, 25m and 31m.

They can be installed on the main boom of 28.5m-76.5m. (Main boom/jib configuration shall be executed as per Instruction Manual).

Hook Block

13.5t hook block (ball hook)

35t hook block

80t hook block

100t hook block

150t hook block

250t hook block

Note: The configuration of above-mentioned operating equipments is of full configuration, with concrete configuration made under the procurement contract.

Safety Device

Moment Limiter

It's a computer-controlled safe operating system, including pull sensor, angle sensor, host computer, display and other hardware. When the hoisted load rate is more than 92% of the rated total load, the moment limiter will give signal; when the hoisted load rate reaches up to 100%, alarm will be given; when the hoisted load rate reaches up to 102%, the crane will be automatically stopped and put into a safe status.

The display screen can display the information about actual load, rated load, operating radius and operating angle in the form of graph.

Overwinding Caging Device of Hook Block

It is used to prevent the hook block from being hoisted too high, featuring automatic winch stop, hydraulic locking and alarm functions.

Safety Device

Anti-over-release Device of Main/Auxiliary Hook Block

It is composed of motion trigger device and proximity switch mounted in the drum. When the wire rope is released close to the last three circles, the anti-over-release device will send alarm signal, and the electronic control system will automatically cut off the hook block falling operation and send alarm signal through buzzer and display.

Installing Mode/Operating Mode Switch

Under installing mode, the anti-over-winding device, boom caging device, A-frame alarm device and moment limiter are inactivated in order for crane assembling.

Under operating mode, all safety devices are activated.

Upper/Lower Caging Device for Main Boom/Jib

When main boom/jib reaches to the upper/lower limit position, it will stop and give alarm.

Anti-back-tipping Support rod for Main Boom

Featuring a steel pipe structure, it plays a supportive role by overcoming the spring compressing force so as to prevent the main boom from tipping back.

Swing Locking Device

Hydraulic power pin can lock the upper structure at the front, rear, left and right positions of chassis(4 positions), and locking status can prevent against misoperation swing operation.

Drum Locking Device

Main winch, auxiliary winch and luffing winch are equipped with electronic-controlled locking device. I.e. prior to operating various winches, the switch button shall be pressed consciously to activate the winch in order to prevent against erroneous action of handle and ensure the safety of winch under non-operating condition.

Main Boom and Mast Angle Indicator

Pendulum-type angle indicator is fixed at the flank of the cab near the boom and mast bases near the cab.

Hook Block Clamp

Any hook block shall be equipped with clamp plate to prevent wire rope from falling off.

Gradienter

As a bubble gradienter mounted at the flank of cab of the main platform and on the crane chassis, it can display an inclination

angle of less than 3°.

Relief Switch

When the operator leaves his seat or pulls up the relief switch handle, the overall load relief switch will be turned on and all operations will be locked up.

Emergency Stop Button

In the event of emergency occurrence, the emergency stop button on the control box in the cab shall be pressed to stop all operations and switch off the electricity.

Tri-color Load Indicator Light

It is installed on the left hood, featuring green, yellow and red colors, among which green indicates that the load rate is less than 92%, yellow indicates that the load rate is between 92%-100%, while red indicated that the load rate is more than 100% and under overload status.

Flash Alarm

It can give acousto-optic alarm in the event of crane startup, swing and travel operations through switch.

Rear View Mirror

It is installed at the flank of the cab and the outer side of left hood in order for the driver to observe the rear situation.

Anti-lightning Stroke

It can effectively improve the safety of equipments under thunderstorm weather.

Optional Remote Monitoring System

It can achieve GPS satellite positioning, GPRS data transmission, equipment use status inquiry, statistics, remote fault diagnosis and other functions.

Illuminating Lamp

Winch illuminating lamp, dipped headlight at the front of cab, front angle adjusting head beam, illuminating lamp in the cab and other night illuminating equipments shall be configured to improve the safety of night construction.

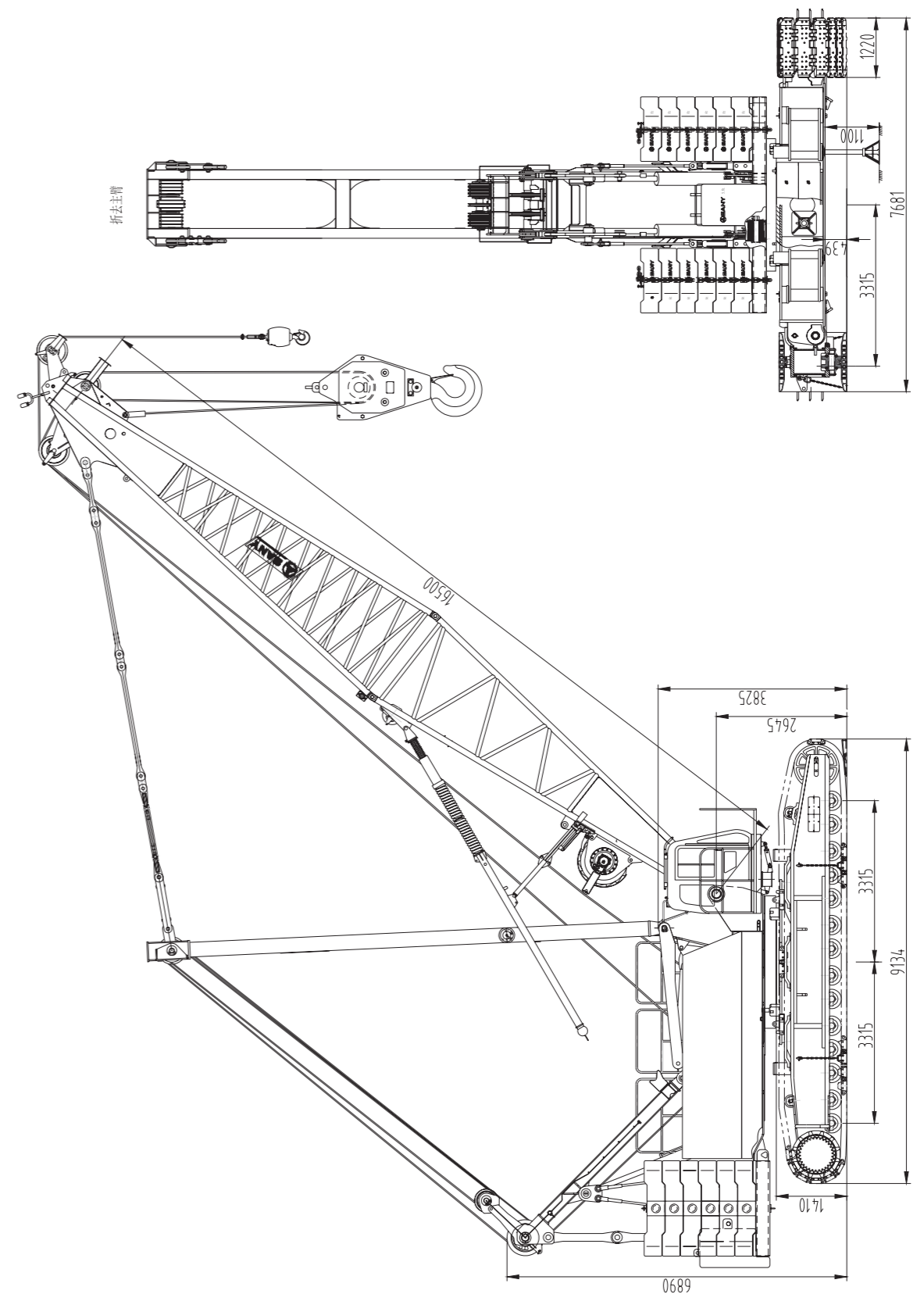
Winch and Crane Rear Monitoring System

It is convenient for operator to monitor the rope arrangement of winch and the safety of crane tail.

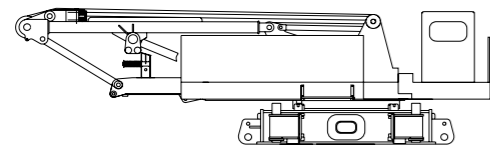
CAN-BUS

CAN-BUS shall be used for data transmission (J1 939 protocol), ensuring the safety and reliability.

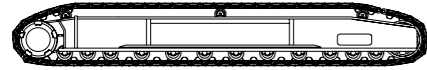
Physical Dimension



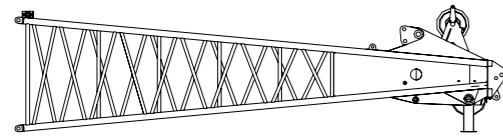
Transportation Dimension of Main Parts



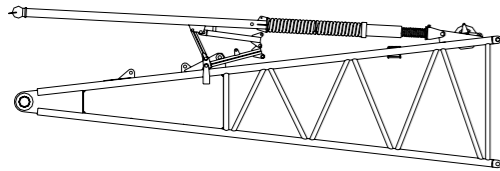
Main body	×1
Length	13.70m
Width	3.40m
Height	3.40m
Weight	57 t



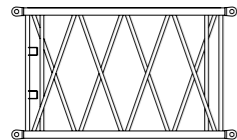
Crawler assembly	×2
Length	9.15m
Width	1.22m
Height	1.38m
Weight	27 t



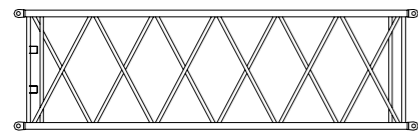
Boom tip	×1
Length	9.26m
Width	2.34m
Height	2.25m
Weight	3.6 t



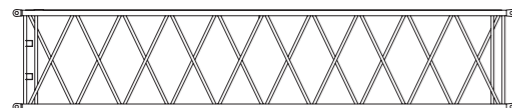
Boom base	×1
Length	8.24m
Width	2.34m
Height	2.25m
Weight	4.9 t
Including jib luffing winch	7.3 t



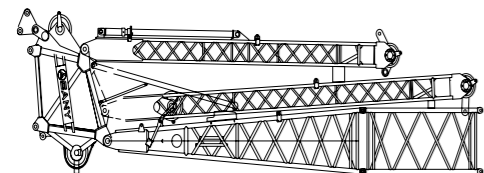
3m boom insert	×1
Length	3.14m
Width	2.34m
Height	2.25m
Weight	0.8 t



6m boom insert	×2
Length	6.14m
Width	2.34m
Height	2.25m
Weight	1.3 t

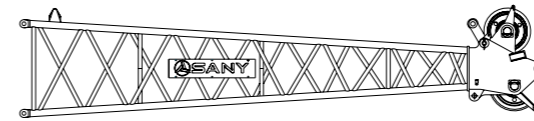


12m boom insert	×5
Length	12.14m
Width	2.34m
Height	2.25m
Weight	2.3 t

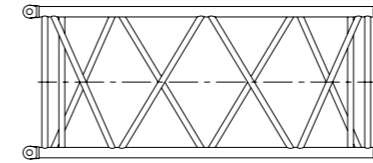


Tower combination	×1
Length	11.8m
Width	1.75m
Height	3.20m
Weight	7.1 t

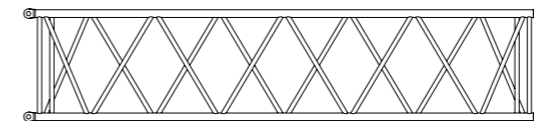
Transportation Dimension of Main Parts



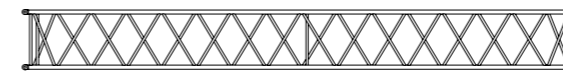
Luffing jib tip	×1
Length	7.02m
Width	1.50m
Height	1.41m
Weight	1.1 t



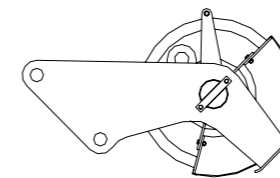
3m luffing jib insert	×2
Length	3.11m
Width	1.50m
Height	1.31m
Weight	0.3 t



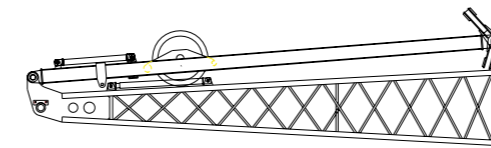
6m luffing jib insert	×1
Length	6.11m
Width	1.50m
Height	1.31m
Weight	0.6 t



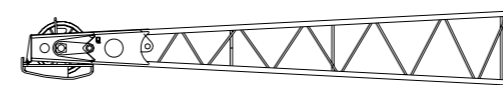
12mluffing jib insert	×3
Length	12.11m
Width	1.50m
Height	1.31m
Weight	1 t



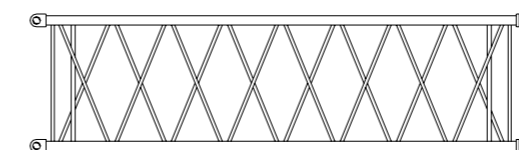
Boom extension	×1
Length	0.98m
Width	0.29m
Height	0.86m
Weight	0.3 t



Fixed jib base and strut	×1
Length	5.18m
Width	1.01m
Height	0.84m
Weight	0.7 t

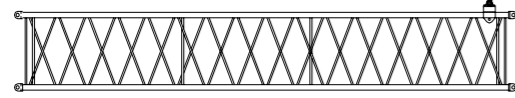


Fixed jib tip	×1
Length	5.47m
Width	1.01m
Height	0.84m
Weight	0.4 t

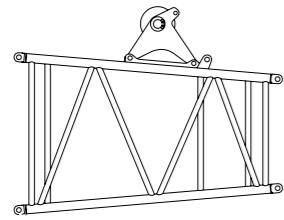


3m fixed jib	×1
Length	3.08m
Width	1.01m
Height	0.84m
Weight	0.2 t

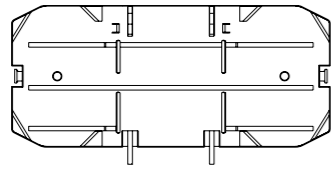
Transportation Dimension of Main Parts



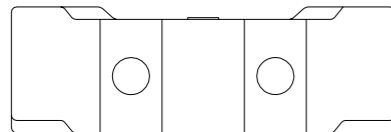
6m fixed jib	×3
Length	6.08m
Width	1.01m
Height	0.84m
Weight	0.3 t



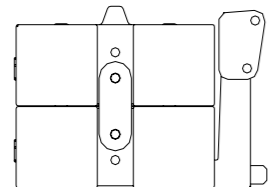
Transitional insert	×1
Length	3.70m
Width	2.23m
Height	2.33m
Weight	1.2 t



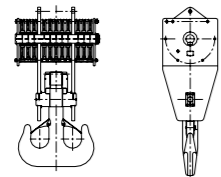
Pallet counterweight block	×1
Length	4.65m
Width	1.96m
Height	0.68m
Weight	13.2 t



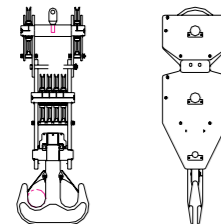
Counterweight block	×12
Length	1.96m
Width	1.33m
Height	0.42m
Weight	6 t



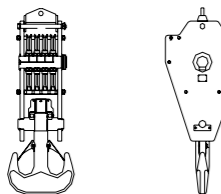
Lower structure counterweight	×2
Length	1.75m
Width	1.44m
Height	0.97m
Weight	12.4 t



250t hook block	×1
Length	1.24m
Width	0.90m
Height	2.61m
Weight	4.3 t

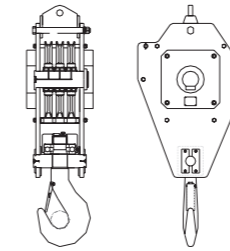


150t hook block	×1
Length	0.99m
Width	0.90m
Height	3.06m
Weight	3.1 t

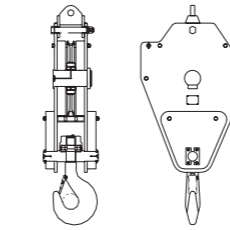


100t hook block	×1
Length	0.90m
Width	0.80m
Height	2.18m
Weight	2 t

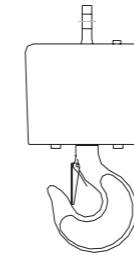
Transportation Dimension of Main Parts



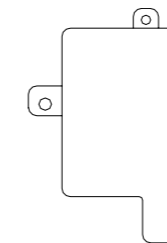
80t hook block	×1
Length	0.90m
Width	0.57m
Height	2.13m
Weight	1.5 t



35t hook block	×1
Length	0.90m
Width	0.44m
Height	1.91m
Weight	1.2 t



13.5t hook block	×1
Length	0.47m
Width	0.47m
Height	0.93m
Weight	0.5 t



Additional counterweight	×1
Length	1.0m
Width	0.9m
Height	1.54m
Weight	5.8 t

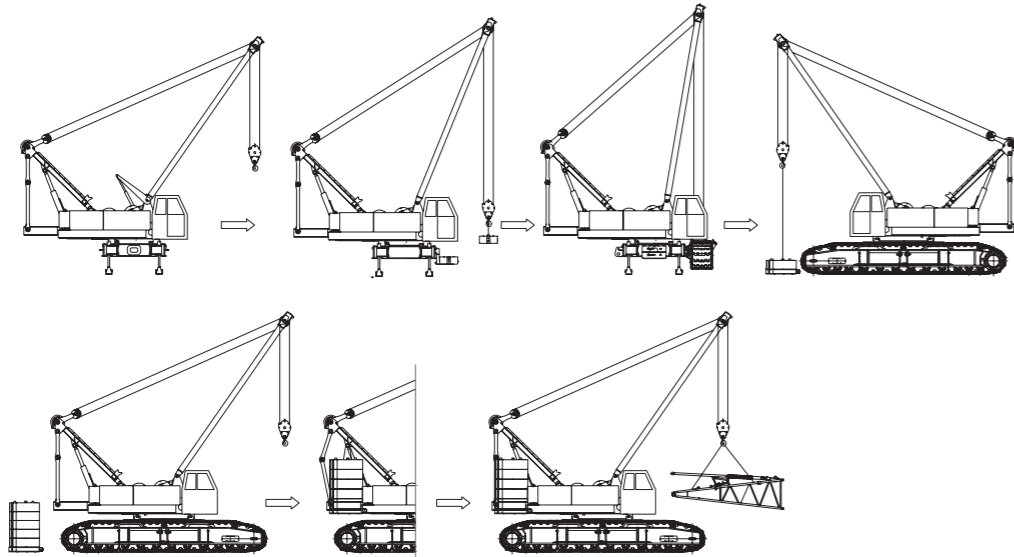
Note:

This part transport size is a schematic diagram, which is drawn in no proportion, so the market size is the design value, excluding the packaging.

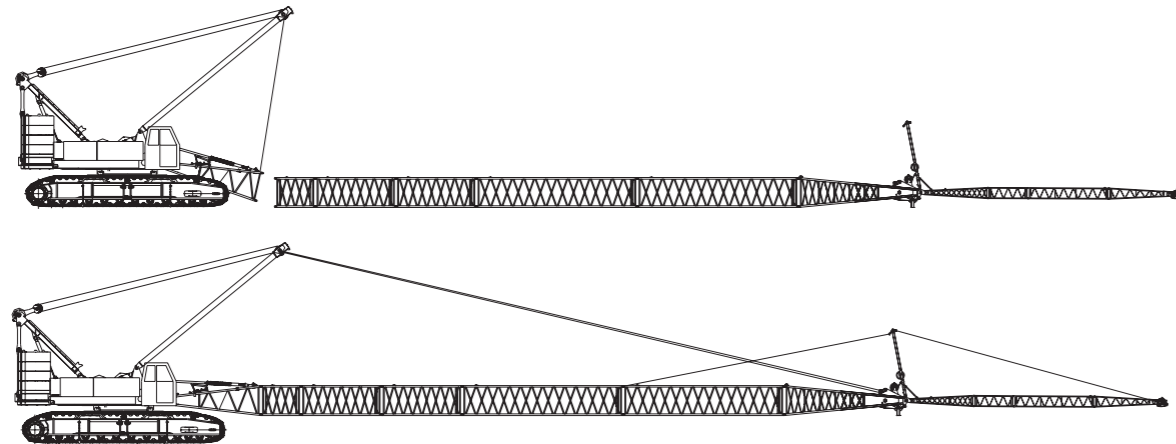
The weight is a design value, which may be different due to manufacturing error.

Self-assembly and disassembly

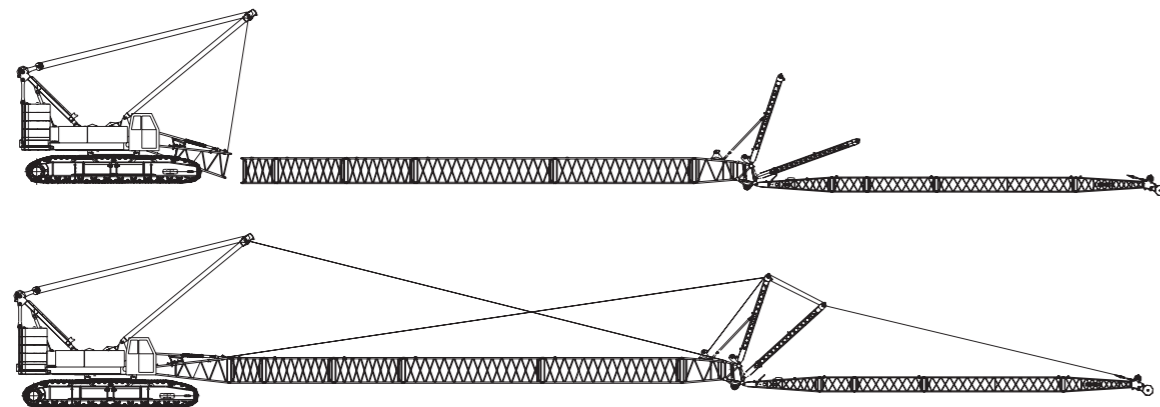
This crane features crawler travel mechanism self-assembly/disassembly, upper structure/lower structure counterweight self-assembly/disassembly and boom self-assembly/disassembly functions. In the course of assembly, the lower structure counterweight should be mounted firstly, then crawler travel mechanism, then the upper structure counterweight and finally the operating boom. Disassembly shall be executed in reverse procedures, as the following figure illustrated.



Schematic diagram of self-assembly and disassembly of track frame and counterweight (disassembly operation shall be executed as per the reverse procedures).



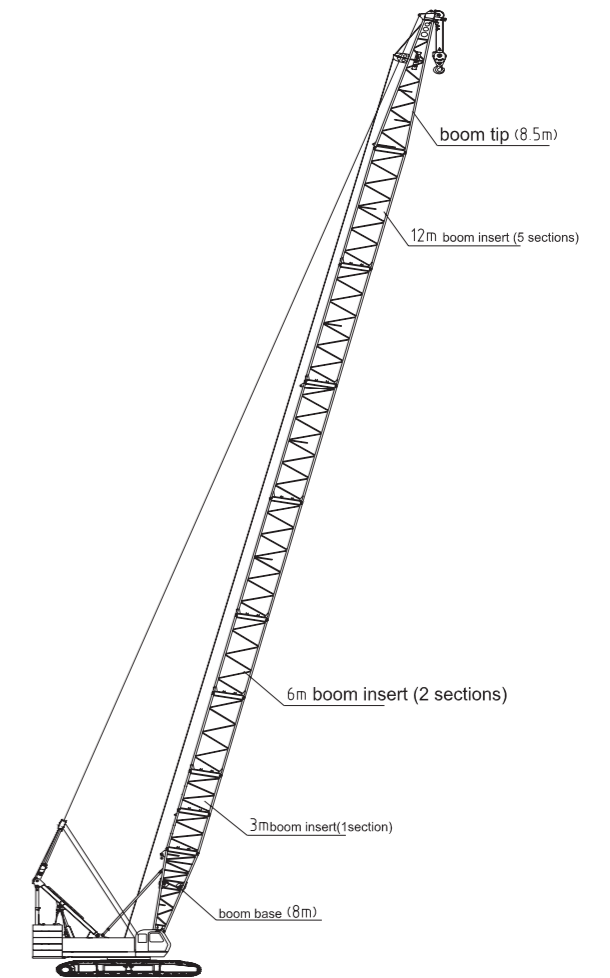
Schematic diagram of fixed jib installation



Schematic diagram of luffing jib installation

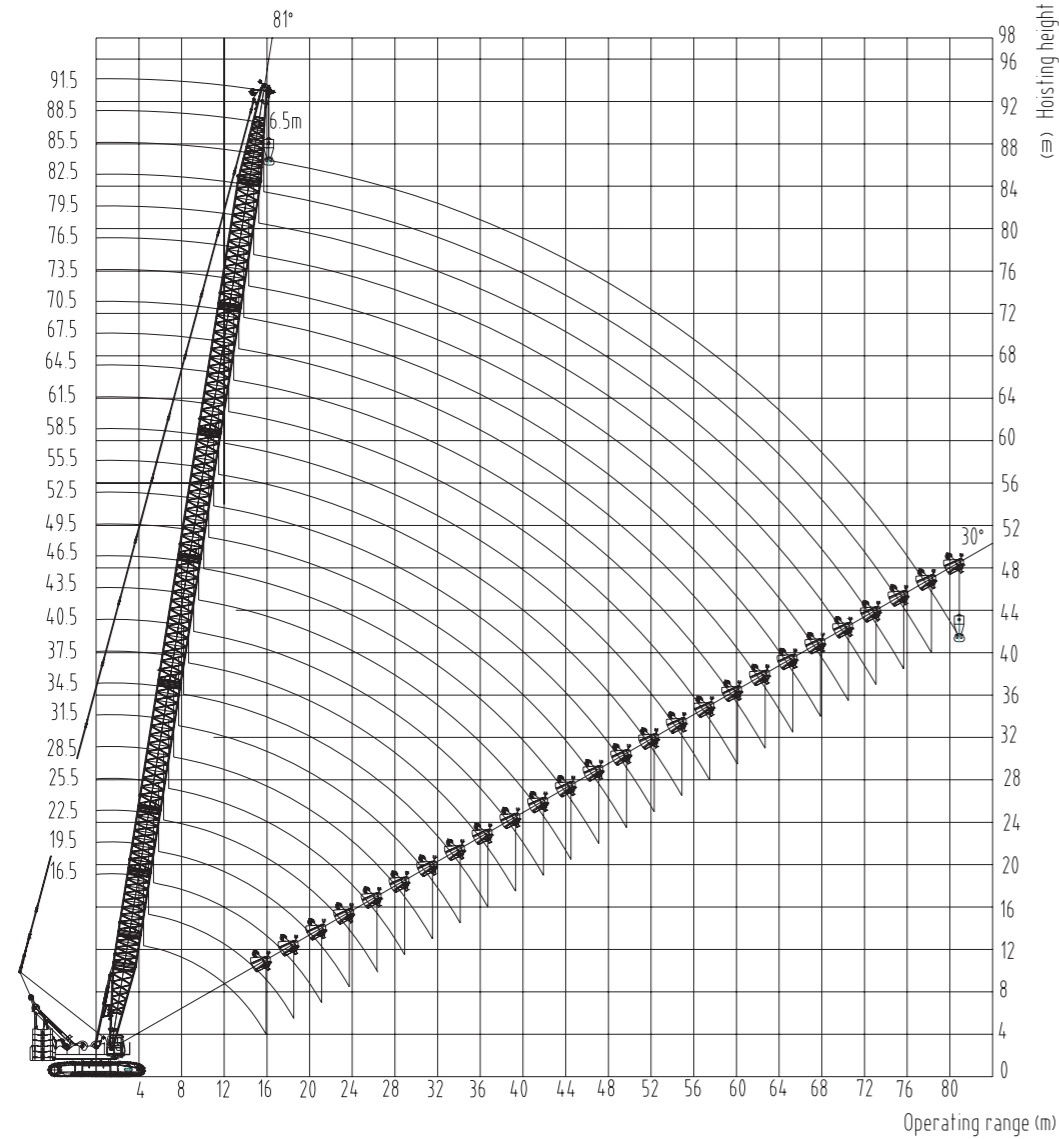
Boom combination

Boom length (m)	Boom insert		
	3 m	6 m	12m
16.5	-	-	-
19.5	1	-	-
22.5	-	1	-
25.5	1	1	-
28.5	-	-	1
31.5	1	-	1
34.5	-	1	1
37.5	1	1	1
40.5	-	-	2
43.5	1	-	2
46.5	-	1	2
49.5	1	1	2
52.5	-	-	3
55.5	1	-	3
58.5	-	1	3
61.5	1	1	3
64.5	-	-	4
67.5	1	-	4
70.5	-	1	4
73.5	1	1	4
76.5	-	-	5
79.5	1	-	5
82.5	-	1	5
85.5	1	1	5
88.5	-	2	5
91.5	1	2	5



Boom combination (16.5m-91.5m)

Operating range under main boom operating condition



Hoisting height and operating range curve

Main boom load chart

SCC2500C main boom load table(excluding boom extension, but including standard counterweight and additional counterweight)

Range (m)	Main boom length (m)							
	16.5	19.5	22.5	25.5	28.5	31.5	34.5	37.5
4	4.8/260							
5	235.5	228.5	5.4/206.5					
6	196.3	193.5	191.2	5.9/184.0	6.6/175.5			
7	168.9	168.2	167.2	166.6	165.7	7.1/155.5	7.7/145.5	
8	148.2	147.5	146.6	145.8	145.6	145.5	143.3	8.2/128.2
9	132.5	131.6	130.2	129.9	128.9	128.3	127.8	125.6
10	120.5	119.7	117.8	116.9	116.4	116.1	115.8	112.1
12	94.6	94.6	94.5	94.5	94.4	94.3	93.7	93.4
14	75.9	75.9	75.8	75.8	75.7	75.7	75.6	75.5
16	15.9/53	64.0	63.6	63.4	63.4	63.4	63.3	63.2
18		55.3	54.1	54.1	54.1	54.1	53.9	53.8
20		18.5/50.5	47.4	47.2	47.1	46.9	46.7	46.6
22			21.1/41.2	41.6	41.5	41.3	41.1	41.0
24				23.7/35.2	36.9	36.7	36.5	36.4
26					33.6	33.0	32.8	32.7
28					26.3/31.8	29.8	29.6	29.5
30						28.9/27.2	26.9	26.9
32							31.5/23.8	24.5
34								21.5
36								
38								
40								
42								
44								
46								
48								
50								
52								
54								
56								
58								
60								
62								
64								
66								
68								
70								
72								
74								
Counterweight (t)	85.2	85.2	85.2	85.2	85.2	85.2	85.2	85.2

Notes: 1. The rated hoisting capacity specified in the table means the operating condition under which standard counterweight and additional counterweight are included, while the vertical value specified in the black box means the operating condition under which only standard counterweight is included.

2. The grey filling part specified in the above table is determined by strength.

Notes: 1. The actual hoisting capacity shall be the value of rated hoisting capacity deducting the weight of hook blocks, wire ropes and all the spreaders.

2. The rated load shown in the table is the weight of cargo which is slowly and steadily lifted by crane on flat and hard ground under the non-travel load condition.

Main boom load chart

SCC2500C main boom load table (excluding boom extension, but including standard counterweight and additional counterweight)							
Range (m)	Main boom length (m)						
	40.5	43.5	46.5	49.5		52.5	
4							
5							
6							
7							
8	8.7/120.5						
9	118.5	9.2/108.8	9.8/99.5				
10	108.2	104.8	97.8	10.3/93.5	10.3/93.5	10.8/85.6	10.8/85.6
12	86.5	86.1	85.1	83.0	83.0	80.2	80.2
14	75.5	75.3	66.2	64.8	70.8	68.8	68.8
16	62.7	62.4	61.5	60.7	61.9	60.0	61.2
18	53.6	53.4	52.8	52.3	53.3	51.6	52.7
20	46.4	46.2	46.0	45.7	46.6	45.1	46.1
22	40.8	40.6	40.3	40.1	40.9	39.9	40.7
24	36.2	36.0	35.7	35.6	36.3	35.3	36.0
26	32.4	32.2	32.0	31.8	32.5	31.5	32.2
28	29.3	29.1	28.8	28.6	29.2	28.4	29.0
30	26.6	26.4	26.1	25.9	26.5	25.7	26.3
32	24.3	24.0	23.8	23.6	24.2	23.4	23.9
34	22.3	22.0	21.8	21.6	22.1	21.3	21.8
36	20.6	20.3	20.1	19.9	20.3	19.6	20.1
38	36.7/19.4	18.8	18.5	18.3	18.8	18.0	18.5
40		39.3/17.3	17.1	16.9	17.3	16.6	17.1
42			41.9/15.5	15.7	16.1	15.4	15.8
44				14.6	15.0	14.3	14.6
46				44.5/13.7	44.5/14.6	13.3	13.6
48						47.1/11.7	47.1/12.5
50							
52							
54							
56							
58							
60							
62							
64							
66							
68							
70							
72							
74							
76							
counterweight (t)	85.2	85.2	85.2	85.2	85.2+5.8	85.2	85.2+5.8

Notes: 1. The rated hoisting capacity specified in the table means the operating condition under which standard counterweight and additional counterweight are included, while the vertical value specified in the black box means the operating condition under which only standard counterweight is included.

2. The grey filling part specified in the above table is determined by strength.

Notes: 1. The actual hoisting capacity shall be the value of rated hoisting capacity deducting the weight of hook blocks, wire ropes and all the spreaders.

2. The rated load shown in the table is the weight of cargo which is slowly and steadily lifted by crane on flat and hard ground under the non-travel load condition.

Main boom load chart

SCC2500C main boom load table (excluding boom extension but including standard counterweight and additional counterweight)								
Range (m)	Main boom length (m)							
	55.5		58.5		61.5		64.5	
4								
5								
6								
7								
8								
9								
10	11.4/82.3	11.4/82.3	11.9/76.8	11.9/76.8				
12	76.5	76.5	75.2	75.2	12.4/69.1	12.4/69.1	12.9/67.8	12.9/67.8
14	68.3	68.3	63.8	63.8	61.2	61.2	59.2	59.2
16	59.3	60.5	57.8	57.8	56.6	56.6	54.9	54.9
18	51.1	52.1	50.5	51.5	50.0	51.1	49.4	50.5
20	44.6	45.5	44.1	45.0	43.7	44.6	43.2	44.1
22	39.5	40.3	38.9	39.7	38.6	39.4	38.1	38.9
24	35.1	35.8	34.7	35.5	34.4	35.2	33.9	34.7
26	31.3	32.0	31.1	31.7	30.9	31.6	30.5	31.1
28	28.2	28.8	27.9	28.5	27.8	28.4	27.5	28.1
30	25.5	26.1	25.2	25.7	25.0	25.6	24.8	25.3
32	23.1	23.7	22.8	23.3	22.7	23.3	22.4	23.0
34	21.1	21.6	20.8	21.3	20.7	21.2	20.4	20.9
36	19.4	19.8	19.0	19.5	18.9	19.4	18.6	19.1
38	17.8	18.2	17.5	17.9	17.4	17.8	17.1	17.5
40	16.4	16.8	16.1	16.5	16.0	16.4	15.7	16.1
42	15.2	15.6	14.8	15.2	14.7	15.1	14.4	14.8
44	14.1	14.4	13.7	14.1	13.6	14.0	13.3	13.7
46	13.1	13.4	12.7	13.1	12.6	12.9	12.3	12.6
48	12.1	12.4	11.8	12.1	11.6	12.0	11.3	11.7
50	49.7/10.8	49.7/11.2	11.0	11.3	10.8	11.1	10.5	10.8
52			10.3	10.3	10.0	10.3	9.7	10.0
54			52.3/9.1	52.3/9.6	9.3	9.6	8.9	9.3
56					54.9/8.1	54.9/8.5	8.3	8.6
58							57.5/7.2	57.5/7.7
60								
62								
64								
66								
68								
70								
72								
74								
76								
Counterweight (t)	85.2	85.2+5.8	85.2	85.2+5.8	85.2	85.2+5.8	85.2	85.2+5.8

Notes: 1. The rated hoisting capacity specified in the table means the operating condition under which standard counterweight and additional counterweight are included, while the vertical value specified in the black box means the operating condition under which only standard counterweight is included.

2. The grey filling part specified in the above table is determined by strength.

Notes: 1. The actual hoisting capacity shall be the value of rated hoisting capacity deducting the weight of hook blocks, wire ropes and all the spreaders.

2. The rated load shown in the table is the weight of cargo which is slowly and steadily lifted by crane on flat and hard ground under the non-travel load condition.

Main boom load chart

SCC2500C main boom load table(excluding boom extension, but including standard counterweight and additional counterweight)								
Range (m)	Main boom length (m)							
	67.5	70.5	73.5	76.5				
5								
6								
8								
10								
12	13.5/63.9	13.5/63.9						
14	58.5	58.5	57.8	57.8	14.5/54.8	14.5/54.8	15.1/50.2	15.1/50.2
16	53.3	53.3	51.1	51.1	50.2	50.2	48.9	48.9
18	48.9	49.9	48.4	49.4	47.9	48.9	46.2	46.2
20	42.6	43.5	42.2	43.1	41.7	42.6	41.3	42.2
22	37.6	38.4	37.2	38.0	36.7	37.6	36.4	37.2
24	33.5	34.2	33.1	33.8	32.7	33.4	32.3	33.1
26	30.0	30.7	29.6	30.3	29.3	29.9	28.9	29.6
28	27.1	27.7	26.7	27.3	26.4	27.0	26.1	26.7
30	24.5	25.1	24.2	24.8	23.9	24.4	23.6	24.1
32	22.2	22.7	21.9	22.5	21.7	22.3	21.4	21.9
34	20.1	20.6	19.9	20.4	19.7	20.2	19.5	20.0
36	18.4	18.8	18.1	18.6	17.9	18.4	17.7	18.2
38	16.8	17.2	16.6	17.0	16.3	16.8	16.1	16.6
40	15.4	15.8	15.2	15.6	14.9	15.4	14.7	15.1
42	14.2	14.6	13.9	14.3	13.7	14.1	13.5	13.9
44	13.0	13.4	12.8	13.1	12.6	12.9	12.3	12.7
46	12.0	12.4	11.8	12.1	11.6	11.9	11.3	11.7
48	11.0	11.4	10.8	11.2	10.6	10.9	10.3	10.7
50	10.2	10.6	9.9	10.3	9.7	10.0	9.4	9.8
52	9.4	9.7	9.1	9.4	8.9	9.2	8.6	9.0
54	8.7	9.0	8.3	8.7	8.1	8.4	7.9	8.2
56	8.0	8.3	7.7	8.0	7.4	7.7	7.2	7.5
58	7.4	7.7	7.1	7.4	6.8	7.1	6.5	6.8
60	59.9/6.6	59.9/6.8	6.5	6.8	6.2	6.5	6.0	6.3
62			5.9	6.2	5.7	6.0	5.4	5.7
64			62.7/5.3	62.7/5.9	5.1	5.4	4.9	5.2
66					65.3/4.5	65.3/4.9	4.4	4.7
68							67.9/3.6	67.9/4.1
70								
72								
74								
76								
Counterweight ht (t)	85.2	85.2+5.8	85.2	85.2+5.8	85.2	85.2+5.8	85.2	85.2+5.8

Notes: 1. The rated hoisting capacity specified in the table means the operating condition under which standard counterweight and additional counterweight are included, while the vertical value specified in the black box means the operating condition under which only standard counterweight is included.

2. The grey filling part specified in the above table is determined by strength.

Notes: 1. The actual hoisting capacity shall be the value of rated hoisting capacity deducting the weight of hook blocks, wire ropes and all the spreaders.

2. The rated load shown in the table is the weight of cargo which is slowly and steadily lifted by crane on flat and hard ground under the non-travel load condition.

Main boom load chart

SCC2500C main boom load table(excluding boom extension, but including standard counterweight and additional counterweight)								
Range (m)	Main boom length (m)							
	79.5	82.5	85.5	88.5				
4								
5								
6								
7								
8								
9								
10								
12								
14	15.6/45.8	15.6/45.8						
16	45.5	45.5	16.1/42.8	16.1/42.8	16.6/38.9	16.6/38.9	17.2/34.2	17.2/34.2
18	43.2	43.2	39.3	39.3	36.5	36.5	33.4	33.4
20	40.8	41.7	37.8	37.8	34.1	34.1	32.2	32.2
22	35.9	36.7	35.4	36.2	32.4	32.4	29.7	29.7
24	31.8	32.6	31.4	32.1	31.0	30.7	28.6	28.6
26	28.5	29.1	28.1	28.7	27.7	28.3	25.9	25.9
28	25.6	26.2	25.2	25.8	24.8	25.4	24.4	24.0
30	23.2	23.7	22.8	23.3	22.4	22.9	22.0	22.5
32	21.0	21.5	20.6	21.1	20.2	20.8	19.9	20.4
34	19.1	19.6	18.7	19.2	18.4	18.9	18.0	18.5
36	17.4	17.9	17.0	17.5	16.7	17.2	16.3	16.8
38	15.9	16.3	15.5	16.0	15.2	15.7	14.9	15.3
40	14.5	14.9	14.2	14.6	13.9	14.3	13.5	13.9
42	13.2	13.6	12.9	13.3	12.7	13.1	12.3	12.7
44	12.1	12.4	11.8	12.2	11.5	11.9	11.2	11.6
46	11.0	11.4	10.7	11.1	10.4	10.8	10.1	10.5
48	10.0	10.4	9.7	10.1	9.5	9.9	9.1	9.5
50	9.1	9.5	8.9	9.2	8.6	8.9	8.2	8.6
52	8.3	8.7	8.0	8.3	7.7	8.1	7.4	7.8
54	7.6	7.9	7.3	7.6	7.0	7.4	6.7	7.0
56	6.9	7.2	6.6	6.9	6.4	6.7	6.0	6.3
58	6.2	6.5	6.0	6.2	5.7	6.0	5.3	5.6
60	5.7	6.0	5.4	5.7	5.1	5.4	4.8	5.0
62	5.1	5.4	4.8	5.1	4.6	4.8	4.2	4.5
64	4.6	4.9	4.3	4.5	4.0	4.3	3.7	4.0
66	4.1	4.4	3.8	4.1	3.5	3.8	3.2	3.5
68	3.7	3.9	3.3	3.6	3.1	3.3	2.7	3.0
70	3.5	3.5	2.9	3.2	2.7	2.9	2.4	2.6
72			2.5	2.8	2.3	2.5		
74								
76								
Counterweight (t)	85.2	85.2+5.8	85.2	85.2+5.8	85.2	85.2+5.8	85.2	85.2+5.8

Notes: 1. The rated hoisting capacity specified in the table means the operating condition under which standard counterweight and additional counterweight are included, while the vertical value specified in the black box means the operating condition under which only standard counterweight is included.

2. The grey filling part specified in the above table is determined by strength.

Notes: 1. The actual hoisting capacity shall be the value of rated hoisting capacity deducting the weight of hook blocks, wire ropes and all the spreaders.

2. The rated load shown in the table is the weight of cargo which is slowly and steadily lifted by crane on flat and hard ground under the non-travel load condition.

Main boom load chart

Range (m)	Main boom length (m)			
	88.5		91.5	
4				
5				
6				
7				
8				
9				
10				
12				
14				
16	17.2/34.2	17.2/34.2	17.7/33.1	17.7/33.1
18	33.4	33.4	30.8	30.8
20	32.2	32.2	29.9	29.9
22	29.7	29.7	28.3	28.3
24	28.6	28.6	27.1	27.1
26	25.9	25.9	25.1	25.1
28	24.4	24.0	23.0	23.0
30	22.0	22.5	21.1	21.1
32	19.9	20.4	19.5	20.0
34	18.0	18.5	17.6	18.1
36	16.3	16.8	15.9	16.4
38	14.9	15.3	14.5	14.9
40	13.5	13.9	13.1	13.5
42	12.3	12.7	11.9	12.3
44	11.2	11.6	10.8	11.2
46	10.1	10.5	9.8	10.1
48	9.1	9.5	8.8	9.2
50	8.2	8.6	7.9	8.3
52	7.4	7.8	7.1	7.5
54	6.7	7.0	6.4	6.7
56	6.0	6.3	5.7	6.0
58	5.3	5.6	5.1	5.4
60	4.8	5.0	4.5	4.7
62	4.2	4.5	3.9	4.2
64	3.7	4.0	3.4	3.7
66	3.2	3.5	2.9	3.1
68	2.7	3.0	2.4	2.7
70	2.4	2.6		
72				
74				
76				
Counterweight (t)	85.2	85.2+5.8	85.2	85.2+5.8

Notes: 1. The rated hoisting capacity specified in the table means the operating condition under which standard counterweight and additional counterweight are included, while the vertical value specified in the black box means the operating condition under which only standard counterweight is included.

2. The grey filling part specified in the above table is determined by strength.

Notes: 1. The actual hoisting capacity shall be the value of rated hoisting capacity deducting the weight of hook blocks, wire ropes and all the spreaders.

2. The rated load shown in the table is the weight of cargo which is slowly and steadily lifted by crane on flat and hard ground under the non-travel load condition.

Main boom load chart

Range (m)	Main boom length (m)						
	16.5	19.5	22.5	25.5	28.5	31.5	34.5
4	4.8/13.5						
5	13.5	13.5	5.4/13.5				
6	13.5	13.5	13.5	5.9/13.5	6.6/13.5		
7	13.5	13.5	13.5	13.5	13.5	7.1/13.5	7.7/13.5
8	13.5	13.5	13.5	13.5	13.5	13.5	13.5
9	13.5	13.5	13.5	13.5	13.5	13.5	13.5
10	13.5	13.5	13.5	13.5	13.5	13.5	13.5
12	13.5	13.5	13.5	13.5	13.5	13.5	13.5
14	13.5	13.5	13.5	13.5	13.5	13.5	13.5
16	15.9/13.5	13.5	13.5	13.5	13.5	13.5	13.5
18		13.5	13.5	13.5	13.5	13.5	13.5
20		18.5/13.5	13.5	13.5	13.5	13.5	13.5
22			21.1/13.5	13.5	13.5	13.5	13.5
24				23.7/13.5	13.5	13.5	13.5
26					13.5	13.5	13.5
28					26.3/13.5	13.5	13.5
30						28.9/13.5	13.5
32							31.5/13.5
34							
36							
38							
40							
42							
44							
46							
48							
50							
52							
54							
56							
58							
60							
62							
64							
66							
68							
70							
72							
74							
76							
Counterweight (t)	85.2	85.2	85.2	85.2	85.2	85.2	85.2

Notes: 1. The rated hoisting capacity specified in the table means the operating condition under which standard counterweight and additional counterweight are included, while the vertical value specified in the black box means the operating condition under which only standard counterweight is included.

2. The grey filling part specified in the above table is determined by strength.

Notes: 1. The actual hoisting capacity shall be the value of rated hoisting capacity deducting the weight of hook blocks, wire ropes and all the spreaders.

2. The rated load shown in the table is the weight of cargo which is slowly and steadily lifted by crane on flat and hard ground under the non-travel load condition.

Main boom load chart

SCC2500C main boom+ boom extension load table(excluding main hook block, but including standard counterweight and additional counterweight)								
Range (m)	Main boom length (m)							
	37.5	40.5	43.5	46.5	49.5		52.5	
4								
5								
6								
7								
8	8.2/13.5	8.7/13.5						
9	13.5	13.5	9.2/13.5	9.8/13.5				
10	13.5	13.5	13.5	13.5	10.3/13.5	10.3/13.5	10.8/13.5	10.8/13.5
12	13.5	13.5	13.5	13.5	13.5	13.5	13.5	13.5
14	13.5	13.5	13.5	13.5	13.5	13.5	13.5	13.5
16	13.5	13.5	13.5	13.5	13.5	13.5	13.5	13.5
18	13.5	13.5	13.5	13.5	13.5	13.5	13.5	13.5
20	13.5	13.5	13.5	13.5	13.5	13.5	13.5	13.5
22	13.5	13.5	13.5	13.5	13.5	13.5	13.5	13.5
24	13.5	13.5	13.5	13.5	13.5	13.5	13.5	13.5
26	13.5	13.5	13.5	13.5	13.5	13.5	13.5	13.5
28	13.5	13.5	13.5	13.5	13.5	13.5	13.5	13.5
30	13.5	13.5	13.5	13.5	13.5	13.5	13.5	13.5
32	13.5	13.5	13.5	13.5	13.5	13.5	13.5	13.5
34	13.5	13.5	13.5	13.5	13.5	13.5	13.5	13.5
36		20.6	13.5	13.5	13.5	13.5	13.5	13.5
38		36.7/13.5	13.5	13.5	13.5	13.5	13.5	13.5
40			39.3/13.5	13.5	13.5	13.5	13.5	13.5
42				41.9/13.5	13.5	13.5	13.5	13.5
44					13.5	13.5	13.5	13.5
46					44.5/13.5	44.5/13.5	12.8	13.1
48							47.1/11.7	47.1/12
50								
52								
54								
56								
58								
60								
62								
64								
66								
68								
70								
72								
74								
76								
Counterweight	85.2	85.2	85.2	85.2	85.2	85.2+5.8	85.2	85.2+5.8

Notes: 1. The rated hoisting capacity specified in the table means the operating condition under which standard counterweight and additional counterweight are included, while the vertical value specified in the black box means the operating condition under which only standard counterweight is included.

2. The grey filling part specified in the above table is determined by strength.

Notes: 1. The actual hoisting capacity shall be the value of rated hoisting capacity deducting the weight of hook blocks, wire ropes and all the spreaders.

2. The rated load shown in the table is the weight of cargo which is slowly and steadily lifted by crane on flat and hard ground under the non-travel load condition.

Main boom load chart

SCC2500C main boom + boom extension load table(excluding main hook block, but including standard counterweight and additional counterweight)								
Range (m)	Main boom length (m)							
	55.5		58.5		61.5		64.5	
4								
5								
6								
7								
8								
9								
10	11.4/13.5	11.4/13.5	11.9/13.5	11.9/13.5				
12	13.5	13.5	13.5	13.5	12.4/13.5	12.4/13.5	12.9/13.5	12.9/13.5
14	13.5	13.5	13.5	13.5	13.5	13.5	13.5	13.5
16	13.5	13.5	13.5	13.5	13.5	13.5	13.5	13.5
18	13.5	13.5	13.5	13.5	13.5	13.5	13.5	13.5
20	13.5	13.5	13.5	13.5	13.5	13.5	13.5	13.5
22	13.5	13.5	13.5	13.5	13.5	13.5	13.5	13.5
24	13.5	13.5	13.5	13.5	13.5	13.5	13.5	13.5
26	13.5	13.5	13.5	13.5	13.5	13.5	13.5	13.5
28	13.5	13.5	13.5	13.5	13.5	13.5	13.5	13.5
30	13.5	13.5	13.5	13.5	13.5	13.5	13.5	13.5
32	13.5	13.5	13.5	13.5	13.5	13.5	13.5	13.5
34	13.5	13.5	13.5	13.5	13.5	13.5	13.5	13.5
36	13.5	13.5	13.5	13.5	13.5	13.5	13.5	13.5
38	13.5	13.5	13.5	13.5	13.5	13.5	13.5	13.5
40	13.5	13.5	13.5	13.5	13.5	13.5	13.5	13.5
42	13.5	13.5	13.5	13.5	13.5	13.5	13.5	13.5
44	13.5	13.5	13.2	13.5	13.1	13.5	12.8	13.2
46	12.6	12.9	12.2	12.6	12.1	12.4	11.8	12.1
48	11.6	11.9	11.3	11.6	11.1	11.5	10.8	11.2
50	49.7/10.8	49.7/10.7	10.5	10.8	10.3	10.6	10.0	10.3
52			9.8	9.8	9.5	9.8	9.2	9.5
54			52.3/9.1	52.3/9.1	8.8	9.1	8.4	8.8
56					54.9/8.1	54.9/8	7.8	8.1
58							57.5/7.2	57.5/7.2
60								
62								
64								
66								
68								
70								
72								
74								
76								
Counterweight (t)	85.2	85.2+5.8	85.2	85.2+5.8	85.2	85.2+5.8	85.2	85.2+5.8

Notes: 1. The rated hoisting capacity specified in the table means the operating condition under which standard counterweight and additional counterweight are included, while the vertical value specified in the black box means the operating condition under which only standard counterweight is included.

2. The grey filling part specified in the above table is determined by strength.

Notes: 1. The actual hoisting capacity shall be the value of rated hoisting capacity deducting the weight of hook blocks, wire ropes and all the spreaders.

2. The rated load shown in the table is the weight of cargo which is slowly and steadily lifted by crane on flat and hard ground under the non-travel load condition.

Main boom load chart

SCC2500C main boom + boom extension load table(excluding main hook block, but including standard counterweight and additional counterweight)								
Range (m)	Main boom length (m)							
	67.5	70.5	73.5	76.5				
4								
5								
6								
7								
8								
9								
10								
12	13.5/13.5	13.5/13.5						
14	13.5	13.5	13.5	13.5	14.5/13.5	14.5/13.5	15.1/13.5	15.1/13.5
16	13.5	13.5	13.5	13.5	13.5	13.5	13.5	13.5
18	13.5	13.5	13.5	13.5	13.5	13.5	13.5	13.5
20	13.5	13.5	13.5	13.5	13.5	13.5	13.5	13.5
22	13.5	13.5	13.5	13.5	13.5	13.5	13.5	13.5
24	13.5	13.5	13.5	13.5	13.5	13.5	13.5	13.5
26	13.5	13.5	13.5	13.5	13.5	13.5	13.5	13.5
28	13.5	13.5	13.5	13.5	13.5	13.5	13.5	13.5
30	13.5	13.5	13.5	13.5	13.5	13.5	13.5	13.5
32	13.5	13.5	13.5	13.5	13.5	13.5	13.5	13.5
34	13.5	13.5	13.5	13.5	13.5	13.5	13.5	13.5
36	13.5	13.5	13.5	13.5	13.5	13.5	13.5	13.5
38	13.5	13.5	13.5	13.5	13.5	13.5	13.5	13.5
40	13.5	13.5	13.5	13.5	13.5	13.5	13.5	13.5
42	13.5	13.5	13.4	13.5	13.2	13.5	13.0	13.4
44	12.5	12.9	12.3	12.6	12.1	12.4	11.8	12.2
46	11.5	11.9	11.3	11.6	11.1	11.4	10.8	11.2
48	10.5	10.9	10.3	10.7	10.1	10.4	9.8	10.2
50	9.7	10.1	9.4	9.8	9.2	9.5	8.9	9.3
52	8.9	9.2	8.6	8.9	8.4	8.7	8.1	8.5
54	8.2	8.5	7.8	8.2	7.6	7.9	7.4	7.7
56	7.5	7.8	7.2	7.5	6.9	7.2	6.7	7.0
58	6.9	7.2	6.6	6.9	6.3	6.6	6.0	6.3
60	59.9/6.6	59.9/6.3	6.0	6.3	5.7	6.0	5.5	5.8
62			5.4	5.7	5.2	5.5	4.9	5.2
64			62.7/5.3	62.7/5.4	4.6	4.9	4.4	4.7
66					65.3/4.5	65.3/4.4	3.9	4.2
68							67.9/3.6	67.9/3.6
70								
72								
74								
76								
Counterweight (t)	85.2	85.2+5.8	85.2	85.2+5.8	85.2	85.2+5.8	85.2	85.2+5.8

Notes: 1. The rated hoisting capacity specified in the table means the operating condition under which standard counterweight and additional counterweight are included, while the vertical value specified in the black box means the operating condition under which only standard counterweight is included.

2. The grey filling part specified in the above table is determined by strength.

Notes: 1. The actual hoisting capacity shall be the value of rated hoisting capacity deducting the weight of hook blocks, wire ropes and all the spreaders.

2. The rated load shown in the table is the weight of cargo which is slowly and steadily lifted by crane on flat and hard ground under the non-travel load condition.

Main boom load chart

SCC2500C main boom + boom extension load table(excluding main hook block, but including standard counterweight and additional counterweight)								
Range (m)	Main boom length (m)							
	79.5	82.5	85.5	88.5				
4								
5								
6								
7								
8								
9								
10								
12								
14	15.6/13.5	15.6/13.5						
16	13.5	13.5	16.1/13.5	16.1/13.5	16.6/13.5	16.6/13.5	17.2/13.5	17.2/13.5
18	13.5	13.5	13.5	13.5	13.5	13.5	13.5	13.5
20	13.5	13.5	13.5	13.5	13.5	13.5	13.5	13.5
22	13.5	13.5	13.5	13.5	13.5	13.5	13.5	13.5
24	13.5	13.5	13.5	13.5	13.5	13.5	13.5	13.5
26	13.5	13.5	13.5	13.5	13.5	13.5	13.5	13.5
28	13.5	13.5	13.5	13.5	13.5	13.5	13.5	13.5
30	13.5	13.5	13.5	13.5	13.5	13.5	13.5	13.5
32	13.5	13.5	13.5	13.5	13.5	13.5	13.5	13.5
34	13.5	13.5	13.5	13.5	13.5	13.5	13.5	13.5
36	13.5	13.5	13.5	13.5	13.5	13.5	13.5	13.5
38	13.5	13.5	13.5	13.5	13.5	13.5	13.5	13.5
40	13.5	13.5	13.5	13.5	13.5	13.5	13.5	13.5
42	12.7	13.1	12.4	12.8	12.2	12.6	11.8	12.2
44	11.6	11.9	11.3	11.7	11.0	11.4	10.7	11.1
46	10.5	10.9	10.2	10.6	9.9	10.3	9.6	10.0
48	9.5	9.9	9.2	9.6	9.0	9.4	8.6	9.0
50	8.6	9.0	8.4	8.7	8.1	8.4	7.7	8.1
52	7.8	8.2	7.5	7.8	7.2	7.6	6.9	7.3
54	7.1	7.4	6.8	7.1	6.5	6.9	6.2	6.5
56	6.4	6.7	6.1	6.4	5.9	6.2	5.5	5.8
58	5.7	6.0	5.5	5.7	5.2	5.5	4.8	5.1
60	5.2	5.5	4.9	5.2	4.6	4.9	4.3	4.5
62	4.6	4.9	4.3	4.6	4.1	4.3	3.7	4.0
64	4.1	4.4	3.8	4.0	3.5	3.8	3.2	3.5
66	3.6	3.9	3.3	3.6	3.0	3.3	2.7	3.0
68	3.2	3.4	2.8	3.1	2.6	2.8	2.2	2.5
70	3.0	3.0	2.4	2.7	2.2	2.4	1.9	2.1
72			2.0	2.3	1.8	2.0		
74								
76								
Counterweight (t)	85.2	85.2+5.8	85.2	85.2+5.8	85.2	85.2+5.8	85.2	85.2+5.8

Notes: 1. The rated hoisting capacity specified in the table means the operating condition under which standard counterweight and additional counterweight are included, while the vertical value specified in the black box means the operating condition under which only standard counterweight is included.

2. The grey filling part specified in the above table is determined by strength.

Notes: 1. The actual hoisting capacity shall be the value of rated hoisting capacity deducting the weight of hook blocks, wire ropes and all the spreaders.

2. The rated load shown in the table is the weight of cargo which is slowly and steadily lifted by crane on flat and hard ground under the non-travel load condition.

Main boom load chart

Operating range of fixed jib

SCC2500C main boom + boom extension load table (excluding main hook block, but including standard counterweight and additional counterweight)

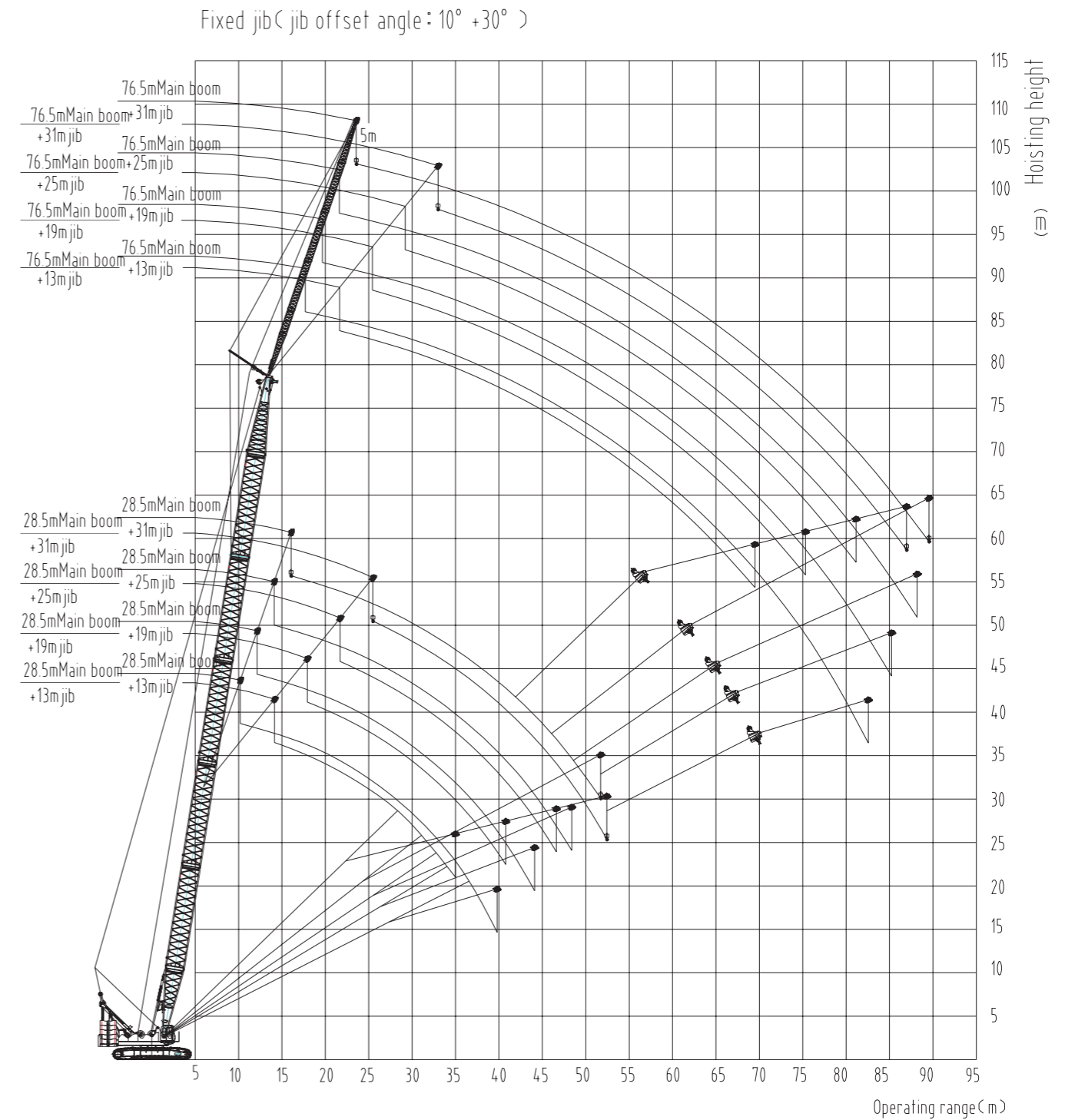
Range (m)	Main boom length (m)	
	91.5	
4		
5		
6		
7		
8		
9		
10		
12		
14		
16	17.7/13.5	17.7/13.5
18	13.5	13.5
20	13.5	13.5
22	13.5	13.5
24	13.5	13.5
26	13.5	13.5
28	13.5	13.5
30	13.5	13.5
32	13.5	13.5
34	13.5	13.5
36	13.5	13.5
38	13.5	13.5
40	12.6	13.0
42	11.4	11.8
44	10.3	10.7
46	9.3	9.6
48	8.3	8.7
50	7.4	7.8
52	6.6	7.0
54	5.9	6.2
56	5.2	5.5
58	4.6	4.9
60	4.0	4.2
62	3.4	3.7
64	2.9	3.2
66	2.4	2.6
68	1.9	2.2
70		
72		
74		
76		
Counterweight (t)	85.2	85.2+5.8

Notes: 1. The rated hoisting capacity specified in the table means the operating condition under which standard counterweight and additional counterweight are included, while the vertical value specified in the black box means the operating condition under which only standard counterweight is included.

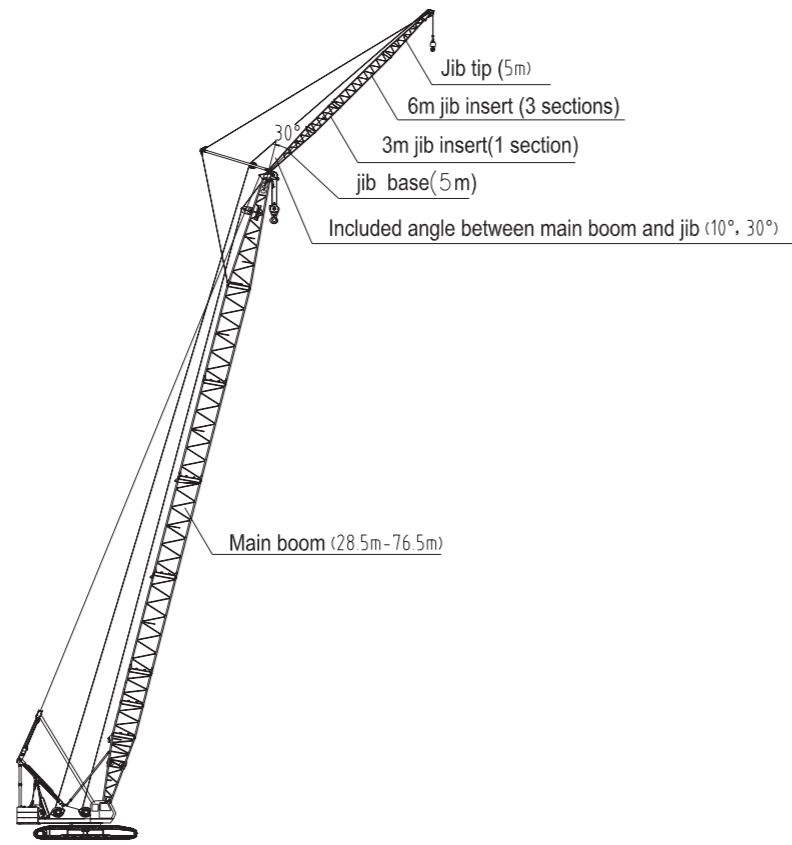
2. The grey filling part specified in the above table is determined by strength.

Notes: 1. The actual hoisting capacity shall be the value of rated hoisting capacity deducting the weight of hook blocks, wire ropes and all the spreaders.

2. The rated load shown in the table is the weight of cargo which is slowly and steadily lifted by crane on flat and hard ground under the non-travel load condition.



Jib length (m)	Jib insert		Main boom length(m)	Included angle between main boom and jib
	3 m	6 m		
13	1	-	28.5~76.5	10°, 30°
19	1	1	28.5~76.5	10°, 30°
25	1	2	28.5~76.5	10°, 30°
31	1	3	28.5~76.5	10°, 30°



Fixed jib combination (13m ,19m ,25m ,31m)

SCC2500C fixed jib load table (excluding main hook block, but including standard counterweight and additional counterweight)

Jib offset angle: 10°				
Main boom length	28.5m			
Jib length	13m	19m	25m	31m
Radius				
10m	10.4m/27.3			
12m	26.0	12.3m/22.0		
14m	24.8	20.8	14.3m/12.3	
16m	23.5	19.7	12.0	16.2m/7.0
18m	22.2	18.8	11.4	6.6
20m	21.1	17.9	10.9	6.3
22m	20.2	17.1	10.5	6.0
24m	19.3	16.4	10.1	5.7
26m	18.5	15.7	9.6	5.4
28m	17.6	14.6	9.3	5.2
30m	17.0	13.7	8.9	5.0
32m	16.4	12.9	8.6	4.8
34m	15.8	12.1	8.3	4.6
36m	15.2	11.5	8.0	4.4
38m	37.1m/14.8	10.9	7.8	4.2
40m		10.5	7.4	4.0
42m		10.0	7.2	3.9
44m		42.9m/9.9	7.0	3.7
46m			6.9	3.6
48m			6.7	3.4
50m			48.9m/6.7	3.3
52m				3.2
54m				3.1
56m				54.6m/3.1
58m				

Jib offset angle: 10°				
Main boom length	40.5m			
Jib length	13m	19m	25m	31m
Radius				
12m	12.2m/27.3			
14m	26.3	14.2m/22.1		
16m	25.3	21.0	16.2m/12.5	
18m	24.4	20.1	12.0	18.1m/7.9
20m	23.6	19.3	11.6	6.7
22m	22.7	18.6	11.2	6.4
24m	21.9	17.9	10.8	6.1
26m	21.2	17.2	10.4	5.9
28m	20.4	16.7	10.1	5.6
30m	19.8	16.2	9.8	5.4
32m	19.1	15.5	9.4	5.2
34m	18.4	14.7	9.1	5.0
36m	17.6	13.9	8.9	4.9
38m	17.0	13.3	8.6	4.7
40m	16.4	12.6	8.4	4.5
42m	15.8	12.0	8.1	4.4
44m	15.2	11.6	7.9	4.2
46m	14.5	11.1	7.7	4.1
48m	47.7m/13.5	10.7	7.4	3.9
50m		10.4	7.3	3.8
52m		10.0	7.1	3.7
54m		53.4m/9.8	7.0	3.6
56m			6.8	3.5
58m			6.7	3.4
60m			59.4m/6.6	3.3
62m				3.2
64m				3.1
66m				65.2m/3.1
68m				

Notes: 1. The rated hoisting capacity specified in the table means that in the operating condition under which standard counterweight and additional counterweight are included.

2. The grey filling part specified in the above table is determined by strength.

Notes: 1. the actual hoisting capacity shall be the value of rated hoisting capacity deducting the weight of hook blocks, wire ropes and all the spreaders.

2. The rated load shown in the table is the weight of cargo which is slowly and steadily lifted by crane on flat and hard ground under the non-travel load condition.

Fixed jib load chart

SCC2500C fixed jib load table (excluding main hook block, but including standard

Main boom length		52.5m			
radius	Jib length	13m	19m	25m	31m
14m	14.1m/27.3				
16m	26.4	16.1m/22.0			
18m	25.6	21.1	12.5		
20m	24.9	20.3	12.1	7.0	
22m	24.0	19.7	11.7	6.7	
24m	23.3	19.0	11.3	6.4	
26m	22.5	18.5	11.0	6.2	
28m	21.9	17.9	10.7	6.0	
30m	21.3	17.3	10.4	5.8	
32m	20.7	16.9	10.1	5.6	
34m	20.1	16.4	9.8	5.4	
36m	19.6	16.0	9.5	5.2	
38m	18.1	15.4	9.3	5.1	
40m	16.7	14.7	9.0	4.9	
42m	15.5	14.1	8.8	4.8	
44m	14.4	13.5	8.6	4.6	
46m	13.4	13.0	8.4	4.5	
48m	12.4	12.4	8.2	4.3	
50m	11.6	12.0	8.0	4.2	
52m	10.9	11.3	7.8	4.1	
54m	10.2	10.6	7.7	4.0	
56m	9.6	10.0	7.4	3.9	
58m	9.0	9.4	7.3	3.8	
60m	58.3m/8.9	8.8	7.2	3.7	
62m		8.3	7.0	3.6	
64m		64.0m/7.9	6.9	3.5	
66m			6.8	3.4	
68m			6.7	3.3	
70m			70.0m/6.6	3.3	
72m				3.2	
74m				3.1	
76m				75.7m/3.1	

Notes: 1. The rated hoisting capacity specified in the table means that in the operating condition under which standard counterweight and additional counterweight are included.

2. The grey filling part specified in the above table is determined by strength.

Notes: 1. the actual hoisting capacity shall be the value of rated hoisting capacity deducting the weight of hook blocks, wire ropes and all the spreaders.

2. The rated load shown in the table is the weight of cargo which is slowly and steadily lifted by crane on flat and hard ground under the non-travel load condition.

Fixed jib load chart

Main boom length		76.5m			
Load radius	Jib length	13m	19m	25m	31m
16m	17.3m/26.8				
18m	27.2	19.8m/22.0			
20m	26.6	21.8	21.8m/12.5		
22m	26.0	21.2	12.4	23.7m/6.8	
24m	25.4	20.6	12.1	6.9	
26m	24.9	20.1	11.8	6.7	
28m	24.4	19.6	11.5	6.5	
30m	22.1	19.1	11.3	6.3	
32m	20.3	18.7	11.0	6.1	
34m	18.7	18.3	10.8	6.0	
36m	17.2	17.9	10.5	5.8	
38m	15.8	16.2	10.3	5.7	
40m	14.5	15.0	10.1	5.5	
42m	13.3	13.8	9.9	5.4	
44m	12.1	12.6	9.7	5.2	
46m	11.1	11.6	9.5	5.1	
48m	10.2	10.7	9.3	5.0	
50m	9.4	9.9	90.8	4.9	
52m	8.7	9.1	8.9	4.7	
54m	8.0	8.4	8.7	4.6	
56m	7.2	7.8	8.4	4.5	
58m	6.6	7.1	7.8	4.4	
60m	6.1	6.5	7.1	4.3	
62m	5.6	6.0	6.6	4.2	
64m	5.1	5.5	6.1	4.1	
66m	4.7	5.1	5.6	4.0	
68m	4.2	4.6	5.2	3.9	
70m	3.8	4.2	4.8	3.9	
72m	3.5	3.9	4.4	3.8	
74m	3.1	3.5	4.1	3.7	
76m	2.8	3.2	3.7	3.6	
78m	2.4	2.9	3.4	3.6	
80m	79.3m/2.2	2.6	3.1	3.4	
82m		2.2	2.8	3.1	
84m		1.9	2.4	2.8	
86m		85.1m/1.8	2.2	2.6	
88m			1.9	2.2	
90m			1.7	2.0	
92m			91.1m/1.5	1.7	

94m				1.5
96m				1.3
98m				96.8m/1.2

Notes: 1. The rated hoisting capacity specified in the table means that in the operating condition under which standard counterweight and additional counterweight are included.

2. The grey filling part specified in the above table is determined by strength.

Notes: 1. the actual hoisting capacity shall be the value of rated hoisting capacity deducting the weight of hook blocks, wire ropes and all the spreaders.

2. The rated load shown in the table is the weight of cargo which is slowly and steadily lifted by crane on flat and hard ground under the non-travel load condition.

Fixed jib load chart

SCC2500C fixed jib load table (excluding main hook block, but excluding standard counterweight and

jib offset angle: 30°					
Main boom length		28.5m			
Load radius	Jib length	13m	19m	25m	31m
14m		14.3m/19.9			
16m		19.1	18.1m/13.8		
18m		18.3	13.8		
20m		17.1	13.8	21.9m/8.4	
22m		16.2	13.4	8.4	
24m		15.5	12.9	8.1	25.6m/4.3
26m		14.8	12.2	7.8	4.2
28m		14.2	11.6	7.5	4.1
30m		13.7	11.1	7.3	3.9
32m		132.6	10.6	7.1	3.8
34m		13.0	10.2	6.9	3.6
36m		12.8	9.9	6.7	3.5
38m		37.8m/12.4	9.6	6.6	3.4
40m			9.4	6.4	3.3
42m			9.2	6.3	3.2
44m			9.1	6.3	3.1
46m			44.2m/9.1	6.2	3.0
48m				6.2	2.9
50m				6.2	2.9
52m				50.3m/6.2	2.8
54m					2.8
56m					2.8
58m					56.4m/2.8
60m					
62m					

Jib offset angle: 30°					
Main boom length		40.5m			
Load radius	Jib length	13m	19m	25m	31m
16m		16.2m/19.8			
18m		19.2	20.0m/13.8		
20m		18.8	13.8		
22m		17.9	13.8	23.3m/8.4	
24m		17.1	13.5	8.3	
26m		16.4	13.3	8.1	27.5m/4.3
28m		15.8	12.8	7.9	4.2
30m		15.2	12.2	7.7	4.1
32m		14.8	11.8	7.4	3.9
34m		14.3	11.3	7.3	3.8
36m		13.9	11.0	7.1	3.7
38m		13.6	10.6	6.9	3.6
40m		13.3	10.3	6.8	3.5
42m		13.1	10.1	6.7	3.4
44m		12.9	9.8	6.6	3.3
46m		12.6	9.6	6.5	3.2
48m		12.6	9.4	6.4	3.2
50m		48.4m/12.6	9.3	6.3	3.1
52m			9.2	6.2	3.0
54m			9.1	6.2	3.0
56m			54.8m/9.1	6.2	2.9
58m				6.2	2.8
60m				6.2	2.8
62m				60.9m/6.2	2.8
64m					2.8
66m					2.8
68m					67.0m/2.8
70m					

Notes: 1. The rated hoisting capacity specified in the table means that in the operating condition under which standard counterweight and additional counterweight are included.

2. The grey filling part specified in the above table is determined by strength.

Notes: 1. the actual hoisting capacity shall be the value of rated hoisting capacity deducting the weight of hook blocks, wire ropes and all the spreaders.

2. The rated load shown in the table is the weight of cargo which is slowly and steadily lifted by crane on flat and hard ground under the non-travel load condition.

Fixed jib load chart

SCC2500C fixed jib load table ((excluding main hook block, but excluding standard counterweight and additional counterweight)

Jib offset angle: 30°					
Main boom length		52.5m			
Load radius	Jib length	13m	19m	25m	31m
18m		18.1m/19.8			
20m		19.3	21.8m/13.8		
22m		18.9	13.8		
24m		18.4	13.8	25.6m/8.4	
26m		17.6	13.6	8.3	
28m		17.0	13.4	8.1	29.4m/4.3
30m		16.5	13.2	8.0	4.2
32m		16.0	12.6	7.8	4.1
34m		15.5	12.2	7.5	4.0
36m		15.1	11.9	7.4	3.9
38m		14.7	11.5	7.2	3.8
40m		14.4	11.2	7.1	3.7
42m		14.0	10.9	7.0	3.6
44m		13.8	10.6	6.9	3.5
46m		13.5	10.4	6.8	3.4
48m		12.8	10.2	6.7	3.3
50m		11.9	9.9	6.6	3.3
52m		11.1	9.7	6.5	3.2
54m		10.4	9.6	6.4	3.1
56m		9.7	9.4	6.3	3.1
58m		9.1	9.3	6.3	3.0
60m		59.0m/8.8	9.2	6.2	3.0
62m			8.6	6.2	2.9
64m			8.1	6.1	2.9
66m			65.4m/7.7	6.1	2.9
68m				6.1	2.8
70m				6.1	2.8
72m				71.5m/6.1	2.8
74m					2.8
76m					2.8
78m					77.6m/2.8

Notes: 1. The rated hoisting capacity specified in the table means that in the operating condition under which standard counterweight and additional counterweight are included.

2. The grey filling part specified in the above table is determined by strength.

Notes: 1. the actual hoisting capacity shall be the value of rated hoisting capacity deducting the weight of hook blocks, wire ropes and all the spreaders.

2. The rated load shown in the table is the weight of cargo which is slowly and steadily lifted by crane on flat and hard ground under the non-travel load condition.

Jib offset angle: 30°					
Main boom length		64.5m			
Load radius	Jib length	13m	19m	25m	31m
20m		19.8			
22m		19.3	23.7m/13.8		
24m		19.0	13.8		
26m		18.7	13.8	27.5m/8.4	
28m		18.1	13.7	8.3	
30m		17.5	13.5	8.1	31.3m/4.2
32m		17.0	13.3	8.0	4.2
34m		16.5	13.1	7.8	4.1
36m		16.1	12.6	7.7	4.0
38m		15.7	12.2	7.5	3.9
40m		15.3	11.9	7.3	3.8
42m		14.9	11.6	7.2	3.7
44m		13.8	11.3	7.1	3.6
46m		12.6	11.1	7.0	3.5
48m		11.7	10.8	6.9	3.5
50m		10.9	10.6	6.8	3.4
52m		10.1	10.4	6.7	3.3
54m		9.4	10.2	6.6	3.3
56m		8.7	9.5	6.6	3.2
58m		8.1	8.9	6.5	3.2
60m		7.4	8.3	6.4	3.1
62m		6.9	7.7	6.4	3.1
64m		6.4	7.1	6.3	3.0
66m		5.9	6.6	6.2	3.0
68m		5.5	6.1	6.2	2.9
70m		69.5m/5.2	5.7	6.2	2.9
72m			5.3	5.8	2.9
74m			4.9	5.4	2.8
76m			75.9m/4.6	5.0	2.8
78m				4.7	2.8
80m				4.3	2.8
82m				82.0m/4.0	2.8
84m					2.8
86m					2.8
88m					2.8
90m					88.1m/2.8

Fixed jib load chart

Operating range of luffing Jib

SCC2500C fixed jib load table (excluding main hook block, but including standard counterweight and additional counterweight)

Jib offset angle:30°					
Main boom length		76.5m			
Load radius	Jib length	13m	19m	25m	31m
20m	21.8m/19.7				
22m	19.6				
24m	19.3	25.6m/13.8			
26m	19.1	13.8			
28m	18.8	13.8	29.4m/8.3		
30m	18.4	13.7	8.3		
32m	17.9	13.5	8.1	33.2m/4.2	
34m	17.3	13.4	8.0	4.2	
36m	16.9	13.2	7.9	4.1	
38m	16.5	13.0	7.7	4.0	
40m	15.2	12.5	7.5	3.9	
42m	13.9	12.2	7.4	3.8	
44m	12.8	11.9	7.3	3.7	
46m	11.7	11.7	7.2	3.6	
48m	10.7	11.4	7.1	3.5	
50m	9.9	10.8	7.0	3.5	
52m	9.1	10.0	6.9	3.4	
54m	8.4	9.3	6.8	3.3	
56m	7.7	8.6	6.8	3.3	
58m	7.0	7.9	6.7	3.2	
60m	6.4	7.2	6.6	3.2	
62m	5.9	6.7	6.5	3.1	
64m	5.4	6.2	6.5	3.1	
66m	4.9	5.7	6.2	3.0	
68m	4.4	5.2	5.8	3.0	
70m	4.0	4.8	5.3	3.0	
72m	3.6	4.4	4.9	3.0	
74m	3.3	4.0	4.5	2.9	
76m	2.9	3.6	4.1	2.9	
78m	2.6	3.3	3.8	2.9	
80m	2.2	2.9	3.4	2.8	
82m	80.1m/2.2	2.6	3.1	2.8	
84m		2.2	2.8	2.8	
86m		1.9	2.4	2.8	
88m		86.5m/1.9	2.1	2.7	

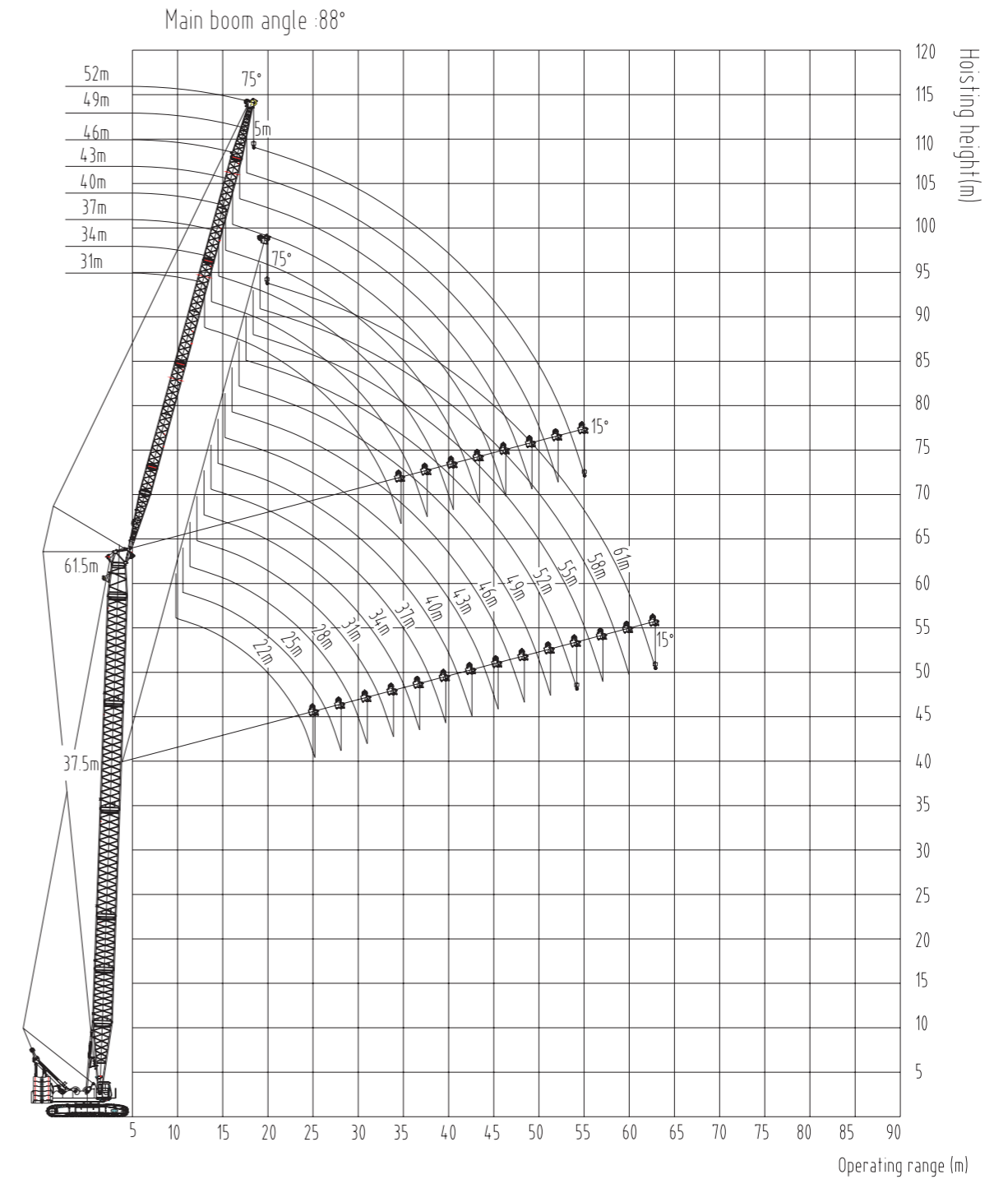
90m			1.8	2.3
92m			1.6	2.0
94m			92.6m/1.5	1.7
96m				1.5
98m				1.3
100m				98.7m/1.2

Notes: 1. The rated hoisting capacity specified in the table means that in the operating condition under which standard counterweight and additional counterweight are included.

2. The grey filling part specified in the above table is determined by strength.

Notes: 1. the actual hoisting capacity shall be the value of rated hoisting capacity deducting the weight of hook blocks, wire ropes and all the spreaders.

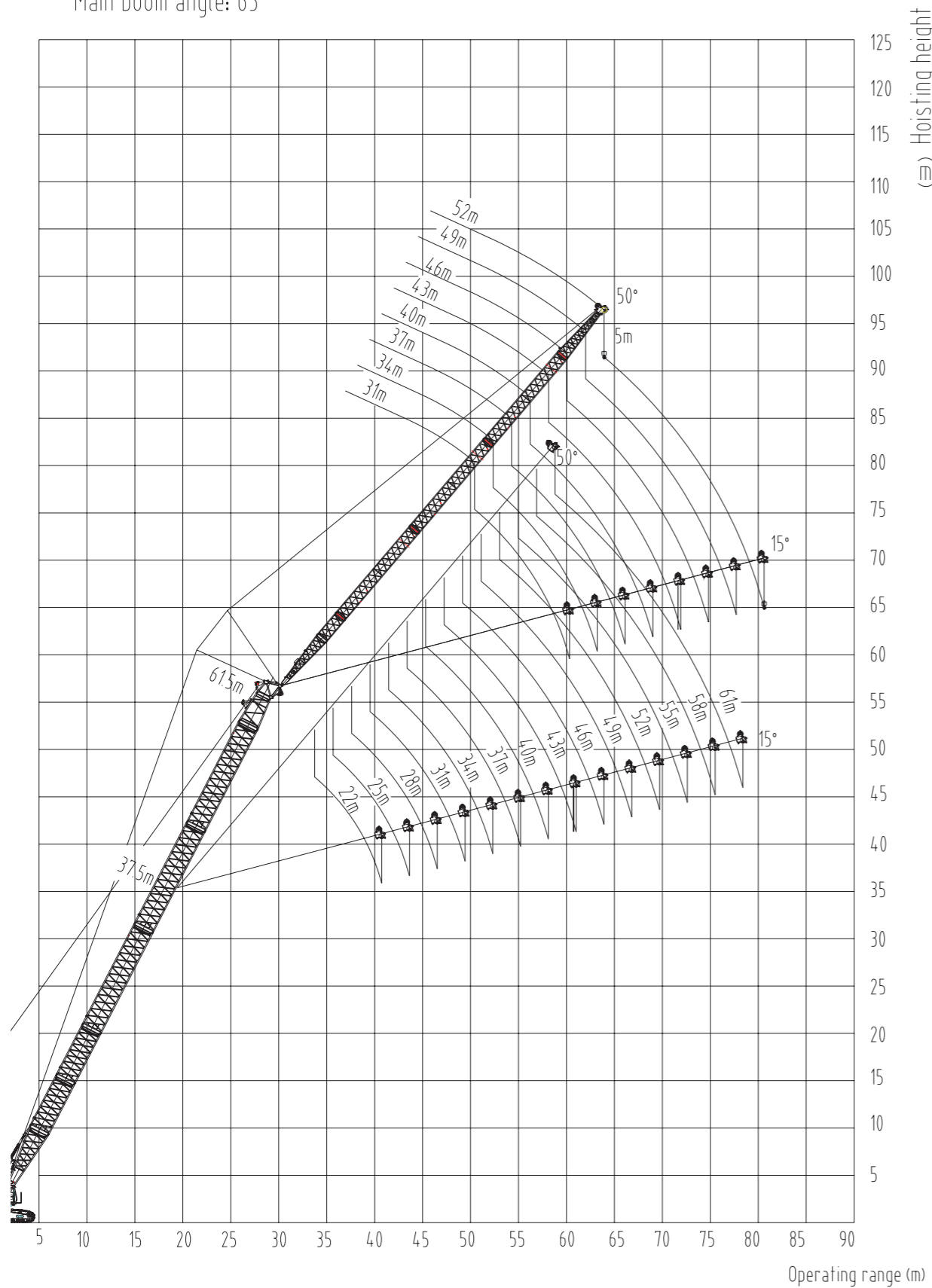
2. The rated load shown in the table is the weight of cargo which is slowly and steadily lifted by crane on flat and hard ground under the non-travel load condition.



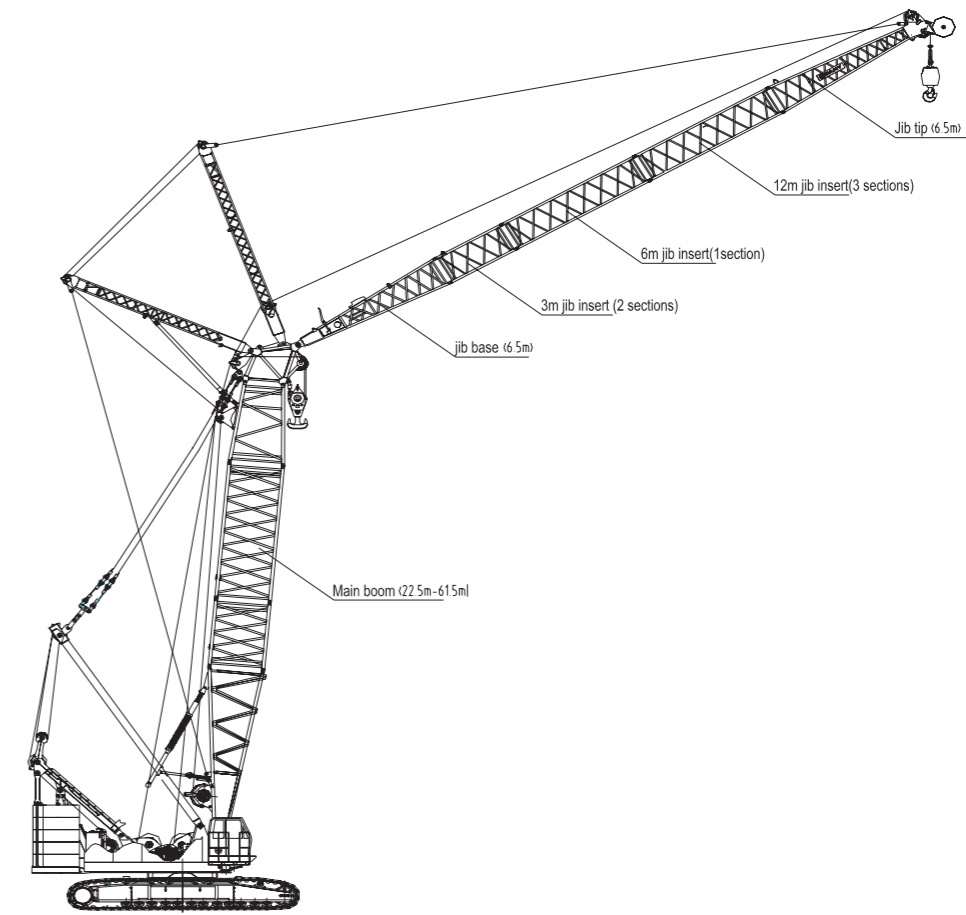
Operating range of luffing Jib

Luffing jib combination

Main boom angle: 63°



Jib length (m)	Jib insert			Main boom length(m)	Main boom angle
	3 m	6 m	12m		
22	1	1	—	22.5~58.5	63°~88°
25	—	—	1	22.5~61.5	63°~88°
31	—	1	1	22.5~61.5	63°~88°
37	—	—	2	22.5~61.5	63°~88°
43	—	1	2	22.5~61.5	63°~88°
52	1	—	3	22.5~61.5	63°~88°
61	2	1	3	22.5~52.5	63°~88°



Luffing jib combination (22m, 25m, 31m, 37m, 43m, 52m, 61m)

Luffing jib load chart

SCC2500C luffing jib load table (excluding main hook block, but including standard counterweight and additional counterweight)

Main boom length	22.5m													
	22m		25m		31m		37m		43m		52m		61m	
Main boom angle (degree)	88	83	88	83	88	83	88	83	88	83	88	83	88	83
9.8m	71.4													
10m	70.7													
12m	63.2		62.6		62.6									
14m	55.9	60.4	56.2		56.2		41.3							
16m	47.6	54.9	48.5	54.9	48.8		41.0		30.2					
18m	40.1	47.4	40.8	48.2	41.1	48.3	37.9		28.3		18.1			
20m	34.5	40.1	35.1	40.7	35.4	41.5	35.3	37.8	26.1		16.6		10.0	
22m	29.7	34.5	30.6	35.1	30.9	35.7	31.8	35.3	24.3	25.1	15.4		9.3	
24m		30.0	27.0	30.6	27.3	31.2	28.2	31.8	22.6	23.5	14.4	15.4	8.6	
26m				27.0	24.4	27.6	25.1	28.2	21.3	21.9	13.4	14.3	8.0	
28m				23.4	21.9	24.7	22.6	25.1	20.0	20.6	12.5	13.4	7.3	8.0
30m					19.9	22.2	20.5	22.6	18.9	19.5	11.7	12.5	6.8	7.3
32m					16.7	20.1	18.7	20.5	17.9	18.5	11.0	11.7	6.3	6.8
34m						17.6	17.0	18.7	16.9	17.4	10.4	11.0	5.6	6.3
36m							15.6	17.1	15.6	16.6	9.8	10.4	4.9	5.6
38m							13.4	15.7	14.4	15.8	9.3	9.8	4.3	4.9
40m								14.0	13.3	14.7	8.8	9.3	3.8	4.3
42m									12.1	13.6	8.3	8.8	3.3	3.8
44m									10.5	12.5	7.9	8.4	2.8	3.3
46m										11.2	7.2	8.0	2.3	2.8
48m											7.1	7.5	1.8	2.3
50m												6.8	7.1	1.8
52m													6.5	6.8
54m														6.6
56m														
58m														

Notes: 1. The rated hoisting capacity specified in the table means that in the operating condition under which standard counterweight and additional counterweight are included.

2. The grey filling part specified in the above table is determined by strength.

Notes: 1. the actual hoisting capacity shall be the value of rated hoisting capacity deducting the weight of hook blocks, wire ropes and all the spreaders.

2. The rated load shown in the table is the weight of cargo which is slowly and steadily lifted by crane on flat and hard ground under the non-travel load condition.

Luffing jib load chart

SCC2500C luffing jib load table (excluding main hook block, but including standard counterweight and additional counterweight)

Main boom length	31.5m															
	22m		25m		31m		37m		43m		52m		61m			
Main boom angle (degree)	88	83	88	83	88	83	88	83	88	83	88	83	88	83		
10m	68.9															
12m	63.2		62.6													
14m	56.7		57.2		54.6		41.3									
16m	48.9	53.5	49.8	52.8	50.1		41.3		30.2							
18m	41.0	47.6	41.7	47.1	42.0	45.2	38.4		28.5		18.3					
20m	35.1	42.3	35.8	42.4	36.0	40.8	35.6	39.3	26.3		16.8					
22m	30.5	37.2	31.1	37.4	31.4	37.1	32.4	35.7	24.5	26.1	15.6		9.3			
24m	24.5	32.4	27.4	32.8	27.7	33.5	28.6	32.7	22.8	24.3	14.5		8.7			
26m		28.4	23.8	28.8	24.7	29.4	25.5	30.0	21.4	22.7	13.5	14.9	8.0			
28m				25.5	22.1	26.1	22.8	26.6	20.1	21.3	12.5	13.9	7.4	8.3		
30m					20.0	23.5	20.7	23.7	19.0	20.1	11.7	13.0	6.9	7.7		
32m						17.6	21.1	18.9	21.5	18.0	19.0	11.0	12.1	6.4	7.1	
34m							19.1	17.2	19.6	17.0	18.0	10.4	11.3	5.7	6.6	
36m								15.8	17.9	15.7	17.0	9.8	10.7	5.0	5.9	
38m								14.0	16.4	14.5	16.2	9.3	10.1	4.4	5.2	
40m									15.1	13.4	15.3	8.8	9.5	3.8	4.6	
42m										12.3	14.2	8.4	9.0	3.3	4.0	
44m											11.0	13.1	7.9	8.6	2.8	3.5
46m												12.1	7.5	8.1	2.3	3.0
48m													7.1	7.7	1.9	2.6
50m														6.8	7.3	2.0
52m															6.5	6.9
54m																6.6
56m																6.4
58m																

Notes: 1. The rated hoisting capacity specified in the table means that in the operating condition under which standard counterweight and additional counterweight are included.

2. The grey filling part specified in the above table is determined by strength.

Notes: 1. the actual hoisting capacity shall be the value of rated hoisting capacity deducting the weight of hook blocks, wire ropes and all the spreaders.

2. The rated load shown in the table is the weight of cargo which is slowly and steadily lifted by crane on flat and hard ground under the non-travel load condition.

Luffing jib load chart

SCC2500C Luffing jib load table (excluding main hook block, but including standard counterweight and additional counterweight)

Main boom length	43.5m													
	22m		25m		31m		37m		43m		52m		61m	
Main boom angle (degree)	88	83	88	83	88	83	88	83	88	83	88	83	88	83
12m	54.6		54.6											
14m	54.6		54.6		53.0									
16m	50.7	48.2	50.4		48.2		40.7		30.3					
18m	42.2	43.0	43.0	42.8	43.2		38.9		28.9					
20m	36.0	38.9	36.7	38.7	36.9	37.1	36.0		26.6		17.0			
22m	31.1	35.5	31.8	35.3	32.1	33.9	33.2	32.5	24.8		15.7		9.5	
24m	26.2	32.6	27.9	32.4	28.3	31.0	29.2	29.9	23.1	25.5	14.6		8.8	
26m		30.0	24.7	30.0	25.1	28.7	25.9	27.5	21.6	23.8	13.6		8.1	
28m		26.9		27.3	22.4	26.6	23.3	25.6	20.3	22.2	12.6	14.5	7.5	
30m				24.8	20.2	24.9	21.0	23.9	19.1	20.9	11.8	13.5	6.9	8.1
32m					18.3	22.6	19.1	22.3	18.1	19.7	11.1	12.6	6.5	7.4
34m						20.4	17.4	20.8	17.1	18.6	10.5	11.8	5.8	6.9
36m						18.5	15.9	19.0	15.8	17.6	9.9	11.1	5.1	6.4
38m							14.6	17.3	14.6	16.7	9.3	10.4	4.5	5.7
40m								15.9	13.5	15.9	8.8	9.8	3.9	5.0
42m								14.6	12.4	14.9	8.4	9.3	3.4	4.4
44m									11.4	13.8	8.0	8.8	2.9	3.8
46m										12.8	7.5	8.4	2.3	3.3
48m										11.8	7.1	8.0	1.9	2.8
50m											6.8	7.5		2.3
52m											6.5	7.1		1.9
54m											6.2	6.8		
56m												6.5		
58m														
60m														

Notes: 1. The rated hoisting capacity specified in the table means that in the operating condition under which standard counterweight and additional counterweight are included.

2. The grey filling part specified in the above table is determined by strength.

Notes: 1. the actual hoisting capacity shall be the value of rated hoisting capacity deducting the weight of hook blocks, wire ropes and all the spreaders.

2. The rated load shown in the table is the weight of cargo which is slowly and steadily lifted by crane on flat and hard ground under the non-travel load condition.

Luffing jib load chart

SCC2500C Luffing Jib Load Table (excluding main hook block, but including standard counterweight and additional counterweight)

Main boom length	52.5m																		
	22m		25m		31m		37m		43m		52m		61m						
Main boom angle (degree)	88	83	88	83	88	83	88	83	88	83	88	83	88	83					
12m	41.3																		
14m	41.3		41.3		41.3														
16m	41.3		41.3		41.3		36.6												
18m	41.3	39.8	41.3	39.7	40.8		36.1		27.3										
20m	37.0	35.9	37.4	35.9	37.0	34.5	35.6		26.9		17.2								
22m	31.9	32.8	32.3	32.8	33.2	31.4	32.5		25.0		15.9		9.6						
24m	27.5	30.2	28.4	30.2	29.1	28.9	29.7	27.7	23.3		14.7		8.8						
26m		27.9	25.0	27.9	26.0	26.6	26.3	25.6	21.7	24.7	13.7		7.9						
28m		26.0	20.5	26.0	23.1	24.7	23.6	23.8	20.4	23.1	12.8	15.1	6.8						
30m				24.4	20.7	23.1	21.2	22.1	19.2	21.6	11.9	14.0	5.8						
32m					22.5	18.8	21.6	19.3	20.7	18.2	20.3	11.2	13.1	5.0	7.8				
34m							20.4	17.5	19.4	17.1	19.2	10.5	12.2	4.2	7.1				
36m								19.3	16.1	18.3	16.0	18.2	9.9	11.4	3.5	6.7			
38m									17.9	14.8	17.3	14.7	17.1	9.4	10.7	2.8	6.1		
40m											16.5	13.6	16.3	8.9	10.1	2.1	5.4		
42m												15.2	12.4	15.5	8.4	9.6		4.7	
44m													14.0	11.5	14.3	8.0	9.0		4.1
46m															13.3	7.5	8.6		3.6
48m															12.2	7.1	8.1		3.1
50m															11.3	6.8	7.7		2.6
52m																6.5	7.3		2.1
54m																6.2	6.9		
56m																	6.6		
58m																	6.3		
60m																			

Luffing jib load chart

SCC2500C Luffing Jib Load Table (excluding main hook block, but including standard counterweight and additional counterweight)

Main boom length	61.5m							
	31m		37m		43m		52m	
Main boom angle (degree)	88	83	88	83	88	83	88	83
14m	34.2							
16m	30.8		27.3					
18m	28.1		27.3		25.9			
20m	25.8		25.4		25.1		17.3	
22m	23.8	28.8	23.5		23.1		16.0	
24m	22.1	26.3	21.7	25.1	21.3		14.8	
26m	20.6	23.9	20.2	23.2	19.8	22.8	13.8	
28m	19.4	22.4	18.9	21.5	18.5	21.1	12.9	
30m	18.3	20.8	17.7	20.0	17.3	19.7	12.0	14.5
32m	17.3	19.5	16.7	18.8	16.2	18.4	11.2	13.5
34m	16.6	18.3	15.8	17.6	15.3	17.1	10.6	12.6
36m		17.2	15.0	16.6	14.5	16.1	9.9	11.8
38m		16.4	14.4	15.7	13.8	15.2	9.4	11.0
40m			13.0	14.9	13.1	14.4	8.9	10.4
42m				14.2	12.4	13.7	8.4	9.8
44m				13.6	11.6	13.0	8.0	9.3
46m						12.3	7.5	8.8
48m						11.8	7.1	8.3
50m						11.4	6.8	7.9
52m							6.5	7.4
54m							6.2	7.1
56m								6.7
58m								6.4
60m								6.2

Notes: 1. The rated hoisting capacity specified in the table means that in the operating condition under which standard counterweight and additional counterweight are included.

2. The grey filling part specified in the above table is determined by strength.

Notes: 1. the actual hoisting capacity shall be the value of rated hoisting capacity deducting the weight of hook blocks, wire ropes and all the spreaders.

2. The rated load shown in the table is the weight of cargo which is slowly and steadily lifted by crane on flat and hard ground under the non-travel load condition.